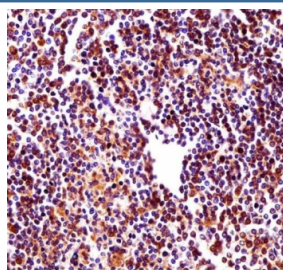


RBM22 Antibody / RNA-binding protein 22 (F54700)

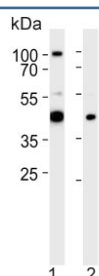
Catalog No.	Formulation	Size
F54700-0.4ML	In 1X PBS, pH 7.4, with 0.09% sodium azide	0.4 ml
F54700-0.08ML	In 1X PBS, pH 7.4, with 0.09% sodium azide	0.08 ml

Bulk quote request

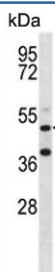
Availability	1-3 business days
Species Reactivity	Human, Zebrafish
Format	Purified
Clonality	Polyclonal (rabbit origin)
Isotype	Rabbit Ig
Purity	Antigen affinity purified
UniProt	Q9NW64
Localization	Cytoplasmic, nuclear
Applications	Western Blot : 1:500-1:2000 Immunohistochemistry (FFPE) : 1:25
Limitations	This RBM22 antibody is available for research use only.



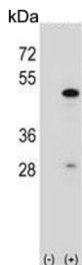
IHC testing of FFPE human spleen tissue with RBM22 antibody. HIER: steam section in pH6 citrate buffer for 20 min and allow to cool prior to staining.



Western blot testing of 1) zebrafish muscle and 2) whole zebrafish lysate with RBM22 antibody. Predicted molecular weight ~47 kDa.



Western blot testing of human Jurkat cell lysate with RBM22 antibody. Predicted molecular weight ~47 kDa.



Western blot testing of 1) non-transfected and 2) transfected 293 cell lysate with RBM22 antibody. Predicted molecular weight ~47 kDa.

Description

This gene encodes an RNA binding protein. The encoded protein may play a role in cell division and may be involved in pre-mRNA splicing. Related pseudogenes exist on chromosomes 6, 7, 9, 13, 16, 18, and X.

Application Notes

The stated application concentrations are suggested starting points. Titration of the RBM22 antibody may be required due to differences in protocols and secondary/substrate sensitivity.

Immunogen

A portion of amino acids 165-193 from the human protein was used as the immunogen for the RBM22 antibody.

Storage

Aliquot the RBM22 antibody and store frozen at -20oC or colder. Avoid repeated freeze-thaw cycles.