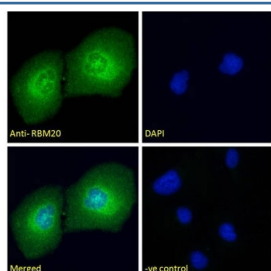


RBM20 Antibody (R35345)

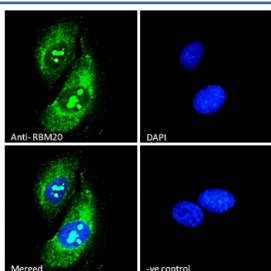
Catalog No.	Formulation	Size
R35345-100UG	0.5 mg/ml in 1X TBS, pH7.3, with 0.5% BSA (US sourced) and 0.02% sodium azide	100 ug

[Bulk quote request](#)

Availability	1-3 business days
Species Reactivity	Human
Format	Antigen affinity purified
Host	Goat
Clonality	Polyclonal (goat origin)
Isotype	Goat Ig
Purity	Antigen affinity
Gene ID	282996
Applications	Immunofluorescence : 10ug/ml ELISA (peptide) LOD : 1:64000
Limitations	This RBM20 antibody is available for research use only.



Immunofluorescent staining of human U-2 OS cells with RBM20 antibody (green) at 10ug/ml and DAPI nuclear stain (blue).



Immunofluorescent staining of human U-2 OS cells with RBM20 antibody (green) at 10ug/ml and DAPI nuclear stain (blue).

Description

Additional name(s) for this target protein: RNA binding motif protein 20

Application Notes

Optimal dilution of the RBM20 antibody should be determined by the researcher.

Immunogen

Amino acids QLDKAELDERP were used as the immunogen for this RBM20 antibody.

Storage

Aliquot and store the RBM20 antibody at -20oC.