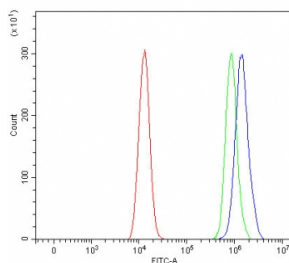


## RBM11 Antibody / RNA-binding motif protein 11 (RQ7812)

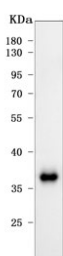
Catalog No.	Formulation	Size
RQ7812	0.5mg/ml if reconstituted with 0.2ml sterile DI water	100 ug

[Bulk quote request](#)

<b>Availability</b>	1-3 business days
<b>Species Reactivity</b>	Human
<b>Format</b>	Antigen affinity purified
<b>Host</b>	Rabbit
<b>Clonality</b>	Polyclonal (rabbit origin)
<b>Isotype</b>	Rabbit IgG
<b>Purity</b>	Antigen affinity purified
<b>Buffer</b>	Lyophilized from 1X PBS with 2% Trehalose
<b>UniProt</b>	P57052
<b>Applications</b>	Western Blot : 0.5-1ug/ml Flow Cytometry : 1-3ug/million cells Direct ELISA : 0.1-0.5ug/ml
<b>Limitations</b>	This RBM11 antibody is available for research use only.



Flow cytometry testing of human HEL cells with RBM11 antibody at 1 ug/million cells (blocked with goat sera); Red=cells alone, Green=isotype control, Blue= RBM11 antibody.



Western blot testing of human 293T cell lysate with RBM11 antibody. Predicted molecular weight ~32 kDa.

## Description

Putative RNA-binding protein 11 is a protein that in humans is encoded by the RBM11 gene. Enables poly(U) RNA binding activity and protein homodimerization activity. Acts upstream of or within cellular response to oxidative stress and regulation of alternative mRNA splicing, via spliceosome. Located in nuclear speck.

## Application Notes

Optimal dilution of the RBM11 antibody should be determined by the researcher.

## Immunogen

E. coli-derived recombinant human protein (amino acids M1-K246) was used as the immunogen for the RBM11 antibody.

## Storage

After reconstitution, the RBM11 antibody can be stored for up to one month at 4oC. For long-term, aliquot and store at -20oC. Avoid repeated freezing and thawing.