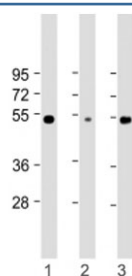


RBCK1 Antibody (UBCE7IP3) [clone 1839CT718.19.54] (F54128)

Catalog No.	Formulation	Size
F54128-0.2ML	In 1X PBS, pH 7.4, with 0.09% sodium azide	0.2 ml
F54128-0.05ML	In 1X PBS, pH 7.4, with 0.09% sodium azide	0.05 ml

[Bulk quote request](#)

Availability	1-3 business days
Species Reactivity	Human
Format	Purified
Clonality	Monoclonal (mouse origin)
Isotype	Mouse IgG1, kappa
Clone Name	1839CT718.19.54
Purity	Protein G purified
UniProt	Q9BYM8
Applications	Western Blot : 1:2000
Limitations	This RBCK1 antibody is available for research use only.



Western blot testing of RBCK1 antibody at 1:2000: Lane 1) human Jurkat, 2) HEK293 and 3) A375 cell lysate. Predicted molecular weight ~58 kDa.

Description

RanBP-type and C3HC4-type zinc finger-containing protein 1 is an E3 ubiquitin-protein ligase which accepts ubiquitin from specific E2 ubiquitin-conjugating enzymes, such as UBE2L3/UBCM4, and then transfers it to substrates. Functions as an E3 ligase for oxidized IREB2 and both heme and oxygen are necessary for IREB2 ubiquitination. Promotes ubiquitination of TAB2 and IRF3 and their degradation by the proteasome. Component of the LUBAC complex which conjugates linear ('Met-1'-linked) polyubiquitin chains to substrates and plays a key role in NF- kappa-B activation and regulation of inflammation. LUBAC conjugates linear polyubiquitin to IKBKG and RIPK1 and is involved in activation of the canonical NF-kappa-B and the JNK signaling pathways. Linear ubiquitination mediated by the LUBAC complex interferes

with TNF-induced cell death and thereby prevents inflammation. LUBAC is proposed to be recruited to the TNF-R1 signaling complex (TNF-RSC) following polyubiquitination of TNF- RSC components by BIRC2 and/or BIRC3 and to conjugate linear polyubiquitin to IKBKG and possibly other components contributing to the stability of the complex. Together with FAM105B/otulin, the LUBAC complex regulates the canonical Wnt signaling during angiogenesis. Binds polyubiquitin of different linkage types. [UniProt]

Application Notes

The stated application concentrations are suggested starting points. Titration of the RBCK1 antibody may be required due to differences in protocols and secondary/substrate sensitivity.

Immunogen

Recombinant human RBCK1 was used as the immunogen for the RBCK1 antibody.

Storage

Aliquot the RBCK1 antibody and store frozen at -20oC or colder. Avoid repeated freeze-thaw cycles.