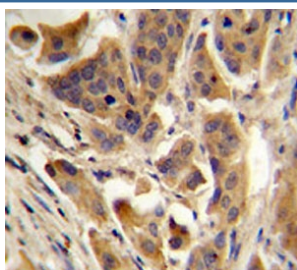


RBCK1 Antibody (F54143)

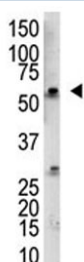
Catalog No.	Formulation	Size
F54143-0.4ML	In 1X PBS, pH 7.4, with 0.09% sodium azide	0.4 ml
F54143-0.08ML	In 1X PBS, pH 7.4, with 0.09% sodium azide	0.08 ml

[Bulk quote request](#)

Availability	1-3 business days
Species Reactivity	Human, Mouse
Format	Purified
Host	Rabbit
Clonality	Polyclonal (rabbit origin)
Isotype	Rabbit Ig
UniProt	Q9BYM8
Localization	Cytoplasmic
Applications	Western Blot : 1:1000 IHC (FFPE) : 1:50-1:100
Limitations	This RBCK1 antibody is available for research use only.



IHC testing of FFPE human bladder carcinoma with RBCK1 antibody. HIER: steam section in pH6 citrate buffer for 20 min.



Western blot testing of mouse kidney tissue lysate with RBCK1 antibody at 1:1000 dilution. Predicted molecular weight ~58 kDa.

Description

RanBP-type and C3HC4-type zinc finger-containing protein 1 is an E3 ubiquitin-protein ligase which accepts ubiquitin from specific E2 ubiquitin-conjugating enzymes, such as UBE2L3/UBCM4, and then transfers it to substrates. Functions as an E3 ligase for oxidized IREB2 and both heme and oxygen are necessary for IREB2 ubiquitination. Promotes ubiquitination of TAB2 and IRF3 and their degradation by the proteasome. Component of the LUBAC complex which conjugates linear ('Met-1'-linked) polyubiquitin chains to substrates and plays a key role in NF- kappa-B activation and regulation of inflammation. LUBAC conjugates linear polyubiquitin to IKBKG and RIPK1 and is involved in activation of the canonical NF-kappa-B and the JNK signaling pathways. Linear ubiquitination mediated by the LUBAC complex interferes with TNF-induced cell death and thereby prevents inflammation. LUBAC is proposed to be recruited to the TNF-R1 signaling complex (TNF-RSC) following polyubiquitination of TNF- RSC components by BIRC2 and/or BIRC3 and to conjugate linear polyubiquitin to IKBKG and possibly other components contributing to the stability of the complex. Together with FAM105B/otulin, the LUBAC complex regulates the canonical Wnt signaling during angiogenesis. Binds polyubiquitin of different linkage types. [UniProt]

Application Notes

The stated application concentrations are suggested starting points. Titration of the RBCK1 antibody may be required due to differences in protocols and secondary/substrate sensitivity.

Immunogen

A portion of amino acids 16-46 from the human protein was used as the immunogen for the RBCK1 antibody.

Storage

Aliquot the RBCK1 antibody and store frozen at -20oC or colder. Avoid repeated freeze-thaw cycles.