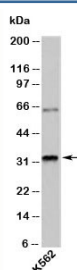


## RAX Antibody (N1107)

Catalog No.	Formulation	Size
N1107-100UG	0.5 mg/ml in 1X PBS with 0.1 mg/ml BSA (US sourced), 0.05% sodium azide	100 ug
N1107-25UG	0.5 mg/ml in 1X PBS with 0.1 mg/ml BSA (US sourced), 0.05% sodium azide	25 ug

[Bulk quote request](#)

Species Reactivity	Human
Format	Purified
Clonality	Polyclonal (rabbit origin)
Isotype	Rabbit IgG
Purity	Protein A affinity chromatography
Buffer	1X PBS, pH 7.4
Gene ID	30062
Applications	Western Blot : 1-3ug/ml
Limitations	This <b>RAX antibody</b> is available for research use only.



Western blot testing of human samples with RAX antibody at 1ug/ml.

## Description

Rax (Retinal and anterior neural fold homeobox), a paired-type homeobox protein, is a human homolog of Drosophila Rx protein. It is a marker of developing eye and forebrain in vertebrates, initially expressed in the region of the forebrain where optic vesicles are formed, and is involved in promoting the division of retinal progenitor cells early in development. As development progresses, expression is seen in the retina and hypothalamus. RAX is essential for eye development. Knockout of RAX in mice eliminated eye development, and RAX mutation in humans result in Anophthalmia, where one or both eyes fail to develop.

## Application Notes

Provided assay concentrations are suggestions only, antibody titration may be required for optimal results.

## Immunogen

A recombinant protein fragment from the C-terminus of human RAX was used as the immunogen for this antibody.

## Storage

Aliquot the antibody and store frozen at -20oC or colder. Avoid repeated freeze-thaw cycles.

## Alternate Names

Retina and anterior neural fold homeobox antibody

## References (1)