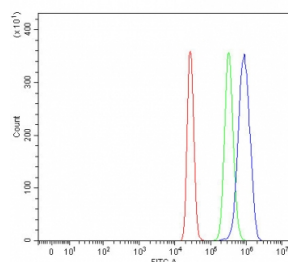


RAVER1 Antibody (RQ7795)

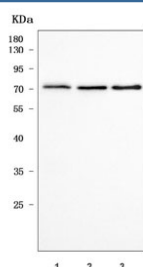
Catalog No.	Formulation	Size
RQ7795	0.5mg/ml if reconstituted with 0.2ml sterile DI water	100 ug

Bulk quote request

Availability	1-3 business days
Species Reactivity	Human
Format	Antigen affinity purified
Clonality	Polyclonal (rabbit origin)
Isotype	Rabbit IgG
Purity	Antigen affinity purified
Buffer	Lyophilized from 1X PBS with 2% Trehalose
UniProt	Q8IY67
Applications	Western Blot : 0.5-1ug/ml Flow Cytometry : 1-3ug/million cells Direct ELISA : 0.1-0.5ug/ml
Limitations	This RAVER1 antibody is available for research use only.



Flow cytometry testing of human HepG2 cells with RAVER1 antibody at 1ug/million cells (blocked with goat sera); Red=cells alone, Green=isotype control, Blue= RAVER1 antibody.



Western blot testing of human 1) 293T, 2) HeLa and 3) HEL cell lysate with RAVER1 antibody. Predicted molecular weight ~64 and ~78 kDa (two isoforms).

Description

Ribonucleoprotein, PTB-binding 1 (also known as RAVER1), is a human gene. Enables RNA binding activity. Predicted to be involved in regulation of alternative mRNA splicing, via spliceosome. Predicted to be located in cytoplasm. Predicted to be active in nucleus.

Application Notes

Optimal dilution of the RAVER1 antibody should be determined by the researcher.

Immunogen

E. coli-derived recombinant human protein (amino acids D209-H567) was used as the immunogen for the RAVER1 antibody.

Storage

After reconstitution, the RAVER1 antibody can be stored for up to one month at 4oC. For long-term, aliquot and store at -20oC. Avoid repeated freezing and thawing.