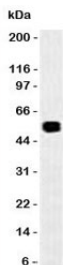


Rat EpCAM Antibody [clone SPM535] (V9124)

Catalog No.	Formulation	Size
V9124-0.5ML	Bioreactor concentrate with 0.05% sodium azide	0.5 ml
V9124-0.1ML	Bioreactor concentrate with 0.05% sodium azide	0.1 ml

[Bulk quote request](#)

Availability	1-3 business days
Species Reactivity	Rat
Format	Bioreactor concentrate
Host	Mouse
Clonality	Monoclonal (mouse origin)
Isotype	Mouse IgG1, kappa
Clone Name	SPM535
UniProt	O55159
Localization	Cell surface, cytoplasmic
Applications	Western Blot : 1:100-1:200
Limitations	This rat EpCAM antibody is available for research use only.



Western blot of rat colon lysate probed with EpCAM antibody (SPM535). Expected molecular weight: ~35 kDa (unmodified), 40-43 kDa (glycosylated).

Description

EGP40 is a 40-43kDa transmembrane epithelial glycoprotein, also identified as epithelial specific antigen (ESA), or epithelial cellular adhesion molecule (Ep-CAM). It is expressed on baso-lateral cell surface in most simple epithelia and a vast majority of carcinomas.

Explore our [EpCAM Antibody / Epithelial Cell Marker Antibody](#) page for additional validation data and applications

involving epithelial cell identification, tissue organization, and epithelial-derived tumor research.

Application Notes

The optimal dilution of the rat EpCAM antibody for each application should be determined by the researcher.

Immunogen

Rat small intestine cells were used as the immunogen for this rat EpCAM antibody.

Storage

Store the rat EpCAM antibody at 2-8oC (with azide) or aliquot and store at -20oC or colder (without azide).