

Rat EpCAM Antibody [clone Epcam/1158] (V3117S)

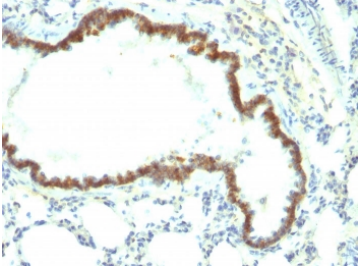
| Catalog No. | Formulation | Size |
|--------------|--|--------|
| V3117S-0.5ML | Bioreactor concentrate with 0.05% sodium azide | 0.5 ml |
| V3117S-0.1ML | Bioreactor concentrate with 0.05% sodium azide | 0.1 ml |
| V3117IHC-7ML | Prediluted in 1X PBS, 0.05% sodium azide; *For IHC use only* | 7 ml |

[Bulk quote request](#)

| | |
|---------------------------|---|
| Availability | 1-3 business days |
| Species Reactivity | Rat and Mouse. Does not react with Human. Others species not known. |
| Format | Bioreactor concentrate |
| Host | Mouse |
| Clonality | Monoclonal (mouse origin) |
| Isotype | Mouse IgG1, kappa |
| Clone Name | Epcam/1158 |
| Purity | Unpurified high titer supernatant |
| UniProt | O55159 |
| Localization | Cell surface, cytoplasmic |
| Applications | Immunohistochemistry (FFPE) : 1:50-1:100 30 min at RT (1) Prediluted IHC Only Format : incubate for 30 min at RT (3) |
| Limitations | This Rat EpCAM Antibody is available for research use only. |



Rat EpCAM Antibody Colon IHC. Formalin-fixed, paraffin-embedded rat colon stained with EpCAM antibody (clone Epcam/1158).



Rat EpCAM Antibody Lung IHC. Formalin-fixed, paraffin-embedded rat lung stained with EpCAM antibody (clone Epcam/1158).

Description

EGP40 is a 40-43kDa transmembrane epithelial glycoprotein, also identified as epithelial specific antigen (ESA), or epithelial cellular adhesion molecule (Ep-CAM). It is expressed on baso-lateral cell surface in most simple epithelia and a vast majority of carcinomas.

Explore our [EpCAM Antibody / Epithelial Cell Marker Antibody](#) page for additional validation data and applications involving epithelial cell identification, tissue organization, and epithelial-derived tumor research.

Application Notes

Optimal dilution of the Rat EpCAM Antibody should be determined by the researcher.

1. Staining of formalin-fixed tissues requires boiling tissue sections in 10mM Citrate buffer, pH 6.0, for 10-20 min followed by cooling at RT for 20 min.
2. The epitopes of mAbs Epcam/1158 and [Epcam/1159](#) monoclonal antibodies are different.
3. The prediluted format is supplied in a dropper bottle and is optimized for use in IHC. After epitope retrieval step (if required), drip mAb solution onto the tissue section and incubate at RT for 30 min.

Immunogen

Recombinant full-length rat protein was used as the immunogen for the Rat EpCAM Antibody.

Storage

Store the Rat EpCAM Antibody at 2-8°C (with azide) or aliquot and store at -20°C or colder (without azide).