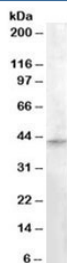


RASSF8 Antibody (R35571)

Catalog No.	Formulation	Size
R35571-100UG	0.5 mg/ml in 1X TBS, pH7.3, with 0.5% BSA (US sourced) and 0.02% sodium azide	100 ug

[Bulk quote request](#)

Availability	1-3 business days
Species Reactivity	Human
Predicted Reactivity	Cow, Mouse
Format	Antigen affinity purified
Host	Goat
Clonality	Polyclonal (goat origin)
Isotype	Goat Ig
Purity	Antigen affinity
Gene ID	11228
Applications	Western Blot : 0.3-1ug/ml ELISA (peptide) LOD : 1:128000
Limitations	This RASSF8 antibody is available for research use only.



Western blot testing of human testis lysate with RASSF8 antibody at 0.3ug/ml. Predicted molecular weight: ~45kDa.

Description

Additional name(s) for this target protein: Ras association (RalGDS/AF-6) domain family 8

Application Notes

Optimal dilution of the RASSF8 antibody should be determined by the researcher.

Immunogen

Amino acids RDTERHLAPHEN were used as the immunogen for this RASSF8 antibody.

Storage

Aliquot and store the RASSF8 antibody at -20oC.