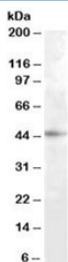


RASSF6 Antibody (R35994)

Catalog No.	Formulation	Size
R35994-100UG	0.5 mg/ml in 1X TBS, pH7.3, with 0.5% BSA (US sourced) and 0.02% sodium azide	100 ug

[Bulk quote request](#)

Availability	1-3 business days
Species Reactivity	Human
Format	Antigen affinity purified
Host	Goat
Clonality	Polyclonal (goat origin)
Isotype	Goat Ig
Purity	Antigen affinity
Gene ID	166824
Applications	Western Blot : 1-3ug/ml ELISA (peptide) LOD : 1:16000
Limitations	This RASSF6 antibody is available for research use only.



Western blot testing of HepG2 cell lysate with RASSF6 antibody at 1ug/ml. Predicted molecular weight: ~43kDa.

Description

Additional name(s) for this target protein: Ras association (RalGDS/AF-6) domain family 6

Application Notes

Optimal dilution of the RASSF6 antibody should be determined by the researcher.

Immunogen

Amino acids SNTLKPHAKDEPDS were used as the immunogen for this RASSF6 antibody.

Storage

Aliquot and store the RASSF6 antibody at -20oC.