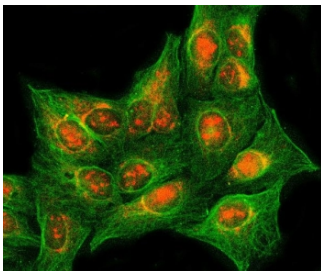


RASSF2 Antibody / Ras association domain-containing protein 2 (RQ7642)

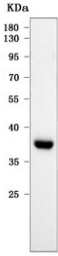
Catalog No.	Formulation	Size
RQ7642	0.5mg/ml if reconstituted with 0.2ml sterile DI water	100 ug

Bulk quote request

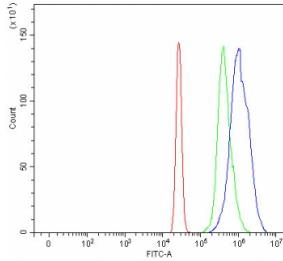
Availability	1-3 business days
Species Reactivity	Human
Format	Antigen affinity purified
Host	Rabbit
Clonality	Polyclonal (rabbit origin)
Isotype	Rabbit IgG
Purity	Antigen affinity purified
Buffer	Lyophilized from 1X PBS with 2% Trehalose
UniProt	P50749
Localization	Nuclear, cytoplasmic
Applications	Western Blot : 0.5-1ug/ml Immunofluorescence : 5ug/ml Flow Cytometry : 1-3ug/million cells Direct ELISA : 0.1-0.5ug/ml
Limitations	This RASSF2 antibody is available for research use only.



Immunofluorescent staining of FFPE human U-2 OS cells with RASSF2 antibody (red) and Alpha Tubulin mAb (green). HIER: steam section in pH6 citrate buffer for 20 min.



Western blot testing of human Raji cell lysate with RASSF2 antibody. Predicted molecular weight ~38 kDa.



Flow cytometry testing of human HL-60 cells with RASSF2 antibody at 1ug/million cells (blocked with goat sera); Red=cells alone, Green=isotype control, Blue= RASSF2 antibody.

Description

Ras association domain-containing protein 2 is a protein that in humans is encoded by the RASSF2 gene. This gene encodes a protein that contains a Ras association domain. Similar to its cattle and sheep counterparts, this gene is located near the prion gene. Two alternatively spliced transcripts encoding the same isoform have been reported.

Application Notes

Optimal dilution of the RASSF2 antibody should be determined by the researcher.

Immunogen

E. coli-derived recombinant human protein (amino acids M1-I326) was used as the immunogen for the RASSF2 antibody.

Storage

After reconstitution, the RASSF2 antibody can be stored for up to one month at 4oC. For long-term, aliquot and store at -20oC. Avoid repeated freezing and thawing.