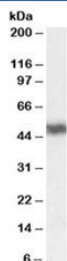


RARA Antibody (R36012)

Catalog No.	Formulation	Size
R36012-100UG	0.5 mg/ml in 1X TBS, pH7.3, with 0.5% BSA (US sourced) and 0.02% sodium azide	100 ug

[Bulk quote request](#)

Availability	1-3 business days
Species Reactivity	Human
Predicted Reactivity	Mouse, Rat, Dog, Cow
Format	Antigen affinity purified
Clonality	Polyclonal (goat origin)
Isotype	Goat Ig
Purity	Antigen affinity
Gene ID	5914
Localization	Cytoplasmic
Applications	Western Blot : 1-3ug/ml ELISA (peptide) LOD : 1:8000
Limitations	This RARA antibody is available for research use only.



Western blot testing of human cerebellum lysate with RARA antibody at 0.05ug/ml.
Predicted/observed molecular weight: ~51 kDa.

Description

Additional name(s) for this target protein: Retinoic acid receptor alpha

Application Notes

Optimal dilution of the RARA antibody should be determined by the researcher.

Immunogen

Amino acids SPSLSPSSHRSSPATQSP were used as the immunogen for this RARA antibody.

Storage

Aliquot and store the RARA antibody at -20oC.