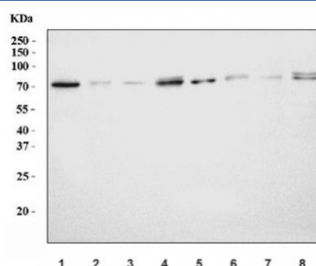


## Ran GTPase-activating protein 1 Antibody / RANGAP1 (RQ7033)

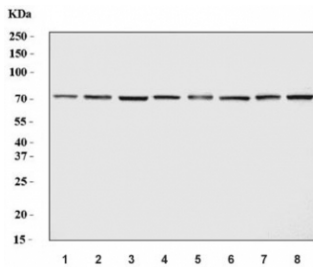
Catalog No.	Formulation	Size
RQ7033	0.5mg/ml if reconstituted with 0.2ml sterile DI water	100 ug

**Bulk quote request**

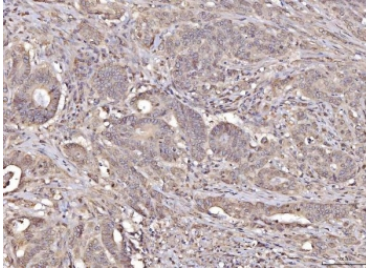
<b>Availability</b>	1-3 business days
<b>Species Reactivity</b>	Human, Mouse, Rat
<b>Format</b>	Antigen affinity purified
<b>Host</b>	Rabbit
<b>Clonality</b>	Polyclonal (rabbit origin)
<b>Isotype</b>	Rabbit IgG
<b>Purity</b>	Antigen affinity purified
<b>Buffer</b>	Lyophilized from 1X PBS with 2% Trehalose
<b>UniProt</b>	P46060
<b>Localization</b>	Cytoplasmic, nuclear
<b>Applications</b>	Western Blot : 0.5-1 ug/ml Immunohistochemistry (FFPE) : 2-5ug/ml Immunofluorescence : 5ug/ml Flow Cytometry : 1-3ug/million cells Direct ELISA : 0.1-0.5ug/ml
<b>Limitations</b>	This Ran GTPase-activating protein 1 antibody is available for research use only.



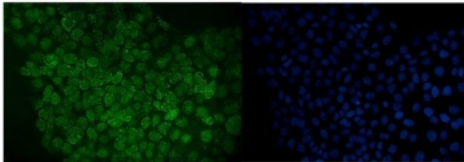
Western blot testing of 1) rat brain, 2) rat stomach, 3) rat small intestine, 4) rat pancreas, 5) mouse brain, 6) mouse stomach, 7) mouse small intestine and 8) mouse pancreas tissue lysate with Ran GTPase-activating protein 1 antibody. Predicted molecular weight 64-70 kDa.



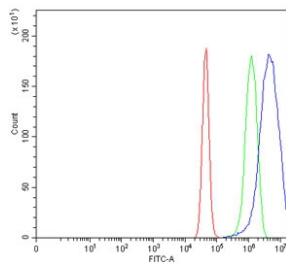
Western blot testing of human 1) SH-SY5Y, 2) 293T, 3) HeLa, 4) A431, 5) HaCaT, 6) MCF7, 7) HL60 and 8) U-251 cell lysate with Ran GTPase-activating protein 1 antibody. Predicted molecular weight 64-70 kDa.



IHC staining of FFPE human colorectal carcinoma tissue with Ran GTPase-activating protein 1 antibody. HIER: boil tissue sections in pH8 EDTA for 20 min and allow to cool before testing.



Immunofluorescent staining of FFPE human A431 cells with Ran GTPase-activating protein 1 antibody (green) and DAPI nuclear stain (blue). HIER: steam section in pH6 citrate buffer for 20 min.



Flow cytometry testing of human U-87 MG cells with Ran GTPase-activating protein 1 antibody at 1ug/million cells (blocked with goat sera); Red=cells alone, Green=isotype control, Blue= Ran GTPase-activating protein 1 antibody.

## Description

Ran GTPase-activating protein 1 is an enzyme that in humans is encoded by the RANGAP1 gene. This gene encodes a protein that associates with the nuclear pore complex and participates in the regulation of nuclear transport. The encoded protein interacts with Ras-related nuclear protein 1 (RAN) and regulates guanosine triphosphate (GTP)-binding and exchange. Alternative splicing results in multiple transcript variants.

## Application Notes

Optimal dilution of the Ran GTPase-activating protein 1 antibody should be determined by the researcher.

## Immunogen

Recombinant human protein (amino acids A165-V587) was used as the immunogen for the Ran GTPase-activating protein 1 antibody.

## Storage

After reconstitution, the Ran GTPase-activating protein 1 antibody can be stored for up to one month at 4°C. For long-term, aliquot and store at -20°C. Avoid repeated freezing and thawing.

