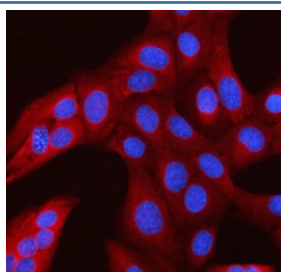


RAN binding protein 1 Antibody / RanBP1 (RQ7822)

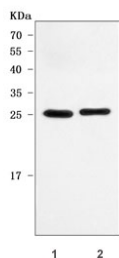
Catalog No.	Formulation	Size
RQ7822	0.5mg/ml if reconstituted with 0.2ml sterile DI water	100 ug

Bulk quote request

Availability	1-3 business days
Species Reactivity	Human
Format	Antigen affinity purified
Host	Rabbit
Clonality	Polyclonal (rabbit origin)
Isotype	Rabbit IgG
Purity	Antigen affinity purified
Buffer	Lyophilized from 1X PBS with 2% Trehalose
UniProt	P43487
Localization	Cytoplasmic
Applications	Western Blot : 0.5-1ug/ml Immunofluorescence : 5ug/ml Direct ELISA : 0.1-0.5ug/ml
Limitations	This RAN binding protein 1 antibody is available for research use only.



Immunofluorescent staining of FFPE human U-2 OS cells with RAN binding protein 1 antibody (red) and DAPI nuclear stain (blue). HIER: steam section in pH6 citrate buffer for 20 min.



Western blot testing of human 1) 293T and 2) Daudi cell lysate with RAN binding protein 1 antibody. Expected molecular weight 23-26 kDa.

Description

Ran-specific binding protein 1 is an enzyme that in humans is encoded by the RANBP1 gene. This gene encodes a protein that forms a complex with Ras-related nuclear protein (Ran) and metabolizes guanoside triphosphate (GTP). This complex participates in the regulation of the cell cycle by controlling transport of proteins and nucleic acids into the nucleus. There are multiple pseudogenes for this gene on chromosomes 9, 12, 17, and X. Alternative splicing results in multiple transcript variants.

Application Notes

Optimal dilution of the RAN binding protein 1 antibody should be determined by the researcher.

Immunogen

E. coli-derived recombinant human protein (amino acids R57-K194) was used as the immunogen for the RAN binding protein 1 antibody.

Storage

After reconstitution, the RAN binding protein 1 antibody can be stored for up to one month at 4°C. For long-term, aliquot and store at -20°C. Avoid repeated freezing and thawing.