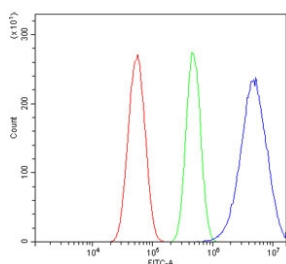


RALBP1 Antibody [clone 2E11.] (RQ6536)

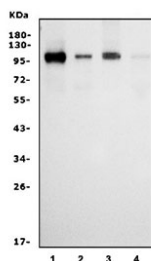
Catalog No.	Formulation	Size
RQ6536	0.5mg/ml if reconstituted with 0.2ml sterile DI water	100 ug

Bulk quote request

Availability	1-3 business days
Species Reactivity	Human
Format	Antigen affinity purified
Host	Mouse
Clonality	Monoclonal (mouse origin)
Isotype	Mouse IgG2a
Clone Name	2E11.
Purity	Affinity purified
Buffer	Lyophilized from 1X PBS with 2% Trehalose
UniProt	Q15311
Localization	Cytoplasmic, nuclear, cell membrane
Applications	Western Blot : 1-2ug/ml Flow Cytometry : 1-3ug/million cells
Limitations	This RALBP1 antibody is available for research use only.



Flow cytometry testing of human U-87 MG cells with RALBP1 antibody at 1ug/million cells (blocked with goat sera); Red=cells alone, Green=isotype control, Blue= RALBP1 antibody.



Western blot testing of human 1) HL60, 2) U-2 OS, 3) Daudi and 4) A431 cell lysate with RALBP1 antibody. Predicted molecular weight ~76 kDa, observed molecular weight: 90-95 kDa.

Description

RalA-binding protein 1 is a protein that in humans is encoded by the RALBP1 gene. Small G proteins, such as RAL, have GDP-bound inactive and GTP-bound active forms, which shift from the inactive to the active state through the action of RALGDS, which in turn is activated by RAS. RALBP1 plays a role in receptor-mediated endocytosis and is a downstream effector of the small GTP-binding protein RAL. RALBP1 is also the dominant transporter of lipid peroxidation-derived glutathione conjugates and participates in several mitotic events, including inactivation of endocytosis and separation and polar movement of centrioles and appropriate distribution of mitochondria to daughter cells following mitosis.

Application Notes

Optimal dilution of the RALBP1 antibody should be determined by the researcher.

Immunogen

An E. coli-derived human protein (amino acids K239-Q506) was used as the immunogen for the RALBP1 antibody.

Storage

After reconstitution, the RALBP1 antibody can be stored for up to one month at 4°C. For long-term, aliquot and store at -20°C. Avoid repeated freezing and thawing.