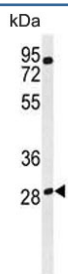


## RagD Antibody / RRAGD (F54410)

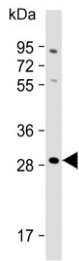
Catalog No.	Formulation	Size
F54410-0.4ML	In 1X PBS, pH 7.4, with 0.09% sodium azide	0.4 ml
F54410-0.08ML	In 1X PBS, pH 7.4, with 0.09% sodium azide	0.08 ml

[Bulk quote request](#)

<b>Availability</b>	1-3 business days
<b>Species Reactivity</b>	Human, Mouse
<b>Format</b>	Purified
<b>Host</b>	Rabbit
<b>Clonality</b>	Polyclonal (rabbit origin)
<b>Isotype</b>	Rabbit Ig
<b>Purity</b>	Antigen affinity purified
<b>UniProt</b>	Q9NQL2
<b>Localization</b>	Nuclear, cytoplasmic
<b>Applications</b>	Flow Cytometry : 1:25 (1x10 <sup>6</sup> cells) Immunohistochemistry (FFPE) : 1:25 Western Blot : 1:500-1:2000
<b>Limitations</b>	This RagD antibody is available for research use only.



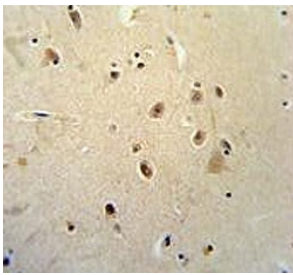
Western blot testing of human MDA-MB-435 cell lysate with RagD antibody. Predicted molecular weight: ~46 kDa (isoform 1) and ~29 kDa (isoform 2).



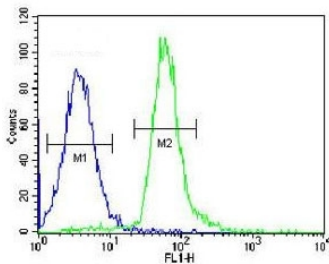
Western blot testing of human 293T cell lysate with RagD antibody. Predicted molecular weight: ~46 kDa (isoform 1) and ~29 kDa (isoform 2).



Western blot testing of mouse cerebellum lysate with RagD antibody. Predicted molecular weight: ~51 kDa and ~30 kDa (multiple isoforms).



IHC testing of FFPE human brain tissue with RagD antibody. HIER: steam section in pH6 citrate buffer for 20 min and allow to cool prior to staining.



Flow cytometry testing of human MDA-MB-435 cells with RagD antibody; Blue=isotype control, Green= RagD antibody.

## Description

Ras-related GTP-binding protein D is a monomeric guanine nucleotide-binding protein, or G protein. By binding GTP or GDP, small G proteins act as molecular switches in numerous cell processes and signaling pathways.

## Application Notes

The stated application concentrations are suggested starting points. Titration of the RagD antibody may be required due to differences in protocols and secondary/substrate sensitivity.

## Immunogen

A portion of amino acids 171-199 from the human protein was used as the immunogen for the RagD antibody. Isoforms 1 and 2 may be detected by this RagD antibody.

## Storage

Aliquot the RagD antibody and store frozen at -20°C or colder. Avoid repeated freeze-thaw cycles.

