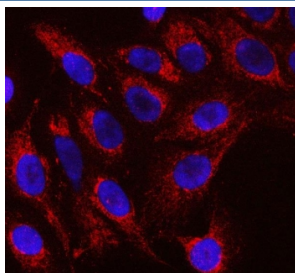


Raftlin Antibody / RFTN1 (RQ7788)

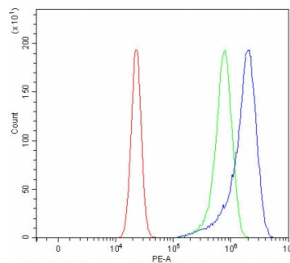
| Catalog No. | Formulation | Size |
|-------------|---|--------|
| RQ7788 | 0.5mg/ml if reconstituted with 0.2ml sterile DI water | 100 ug |

Bulk quote request

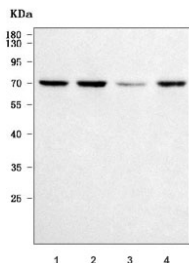
| | |
|---------------------------|---|
| Availability | 1-3 business days |
| Species Reactivity | Human |
| Format | Antigen affinity purified |
| Host | Rabbit |
| Clonality | Polyclonal (rabbit origin) |
| Isotype | Rabbit IgG |
| Purity | Antigen affinity purified |
| Buffer | Lyophilized from 1X PBS with 2% Trehalose |
| UniProt | Q14699 |
| Localization | Cytoplasmic |
| Applications | Western Blot : 0.5-1ug/ml Immunofluorescence : 5ug/ml Flow Cytometry : 1-3ug/million cells Direct ELISA : 0.1-0.5ug/ml |
| Limitations | This Raftlin antibody is available for research use only. |



Immunofluorescent staining of FFPE human U-2 OS cells with Raftlin antibody (red) and DAPI nuclear stain (blue). HIER: steam section in pH6 citrate buffer for 20 min.



Flow cytometry testing of human U-2 OS cells with Raftlin antibody at 1ug/million cells (blocked with goat sera); Red=cells alone, Green=isotype control, Blue= Raftlin antibody.



Western blot testing of human 1) HeLa , 2) Raji, 3) SH-SY5Y and 4) Daudi cell lysate with Raftlin antibody. Predicted molecular weight ~63 kDa, commonly observed at 63-70 kDa.

Description

Enables double-stranded RNA binding activity. Involved in B cell receptor signaling pathway; membrane raft assembly; and positive regulation of growth rate. Acts upstream of or within dsRNA transport; response to exogenous dsRNA; and toll-like receptor 3 signaling pathway. Located in endosome; membrane raft; and plasma membrane. Part of protein-containing complex.

Application Notes

Optimal dilution of the Raftlin antibody should be determined by the researcher.

Immunogen

E. coli-derived recombinant human protein (amino acids N18-K437) was used as the immunogen for the Raftlin antibody.

Storage

After reconstitution, the Raftlin antibody can be stored for up to one month at 4oC. For long-term, aliquot and store at -20oC. Avoid repeated freezing and thawing.