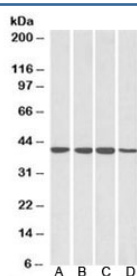


## RAE1 Antibody (R34756)

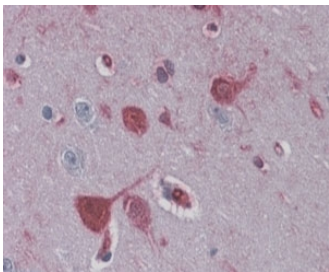
Catalog No.	Formulation	Size
R34756-100UG	0.5 mg/ml in 1X TBS, pH7.3, with 0.5% BSA (US sourced) and 0.02% sodium azide	100 ug

[Bulk quote request](#)

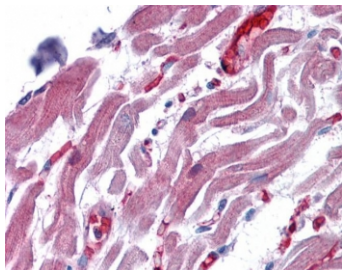
Availability	1-3 business days
Species Reactivity	Human
Predicted Reactivity	Mouse, Rat, Dog, Pig, Cow
Format	Antigen affinity purified
Host	Goat
Clonality	Polyclonal (goat origin)
Isotype	Goat Ig
Purity	Antigen affinity
Gene ID	8480
Localization	Cytoplasmic, nuclear
Applications	Western Blot : 0.03-0.1ug/ml Immunohistochemistry (FFPE) : 3-6ug/ml ELISA (peptide) LOD : 1:64000
Limitations	This RAE1 antibody is available for research use only.



Western blot testing of A) HepG2, B) HeLa, C) Jurkat and D) MCF7 lysates with RAE1 antibody at 0.1ug/ml. Predicted molecular weight: ~41 kDa.



IHC staining of FFPE human brain cortex with RAE1 antibody at 4ug/ml. HIER: steamed with pH6 citrate buffer, AP-staining.



IHC staining of FFPE human heart with RAE1 antibody at 4ug/ml. HIER: steamed with pH6 citrate buffer, AP-staining.

## Description

Additional name(s) for this target protein: RNA export 1

## Application Notes

Optimal dilution of the RAE1 antibody should be determined by the researcher.

## Immunogen

Amino acids NAAEELKPRNKK were used as the immunogen for this RAE1 antibody.

## Storage

Aliquot and store the RAE1 antibody at -20oC.