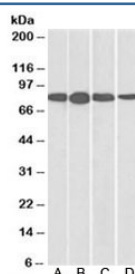


## Radixin Antibody (R35200)

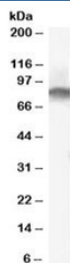
Catalog No.	Formulation	Size
R35200-100UG	0.5 mg/ml in 1X TBS, pH7.3, with 0.5% BSA (US sourced) and 0.02% sodium azide	100 ug

[Bulk quote request](#)

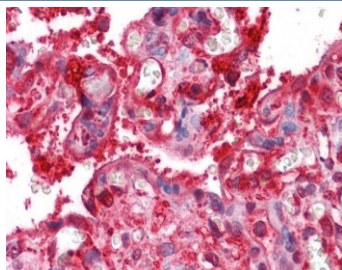
Availability	1-3 business days
Species Reactivity	Human, Mouse, Rat
Predicted Reactivity	Dog
Format	Antigen affinity purified
Host	Goat
Clonality	Polyclonal (goat origin)
Isotype	Goat Ig
Purity	Antigen affinity
Gene ID	5962
Applications	Western Blot : 0.03-0.1ug/ml IHC (FFPE) : 2.5ug/ml ELISA (peptide) LOD : 1:4000
Limitations	This Radixin antibody is available for research use only.



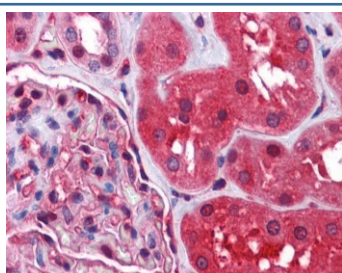
Western blot of mouse NIH3T3 (A), and human HeLa (B), Jurkat (C), and A431 (D) lysates with Radixin antibody at 0.01ug/ml. Predicted molecular weight: ~69kDa, routinely observed at ~82kDa (Ref 1).



Western blot testing of human tonsil lysate with Radixin antibody at 0.03ug/ml. Predicted molecular weight: ~69kDa, routinely observed at ~82kDa (Ref 1).



IHC testing of FFPE human placenta tissue with Radixin antibody at 2.5ug/ml. Required HIER: steamed antigen retrieval with pH6 citrate buffer; AP-staining.



IHC testing of FFPE human kidney tissue with Radixin antibody at 2.5ug/ml. Required HIER: steamed antigen retrieval with pH6 citrate buffer; AP-staining.

## Description

Additional name(s) for this target protein: RDX

## Application Notes

Optimal dilution of the Radixin antibody should be determined by the researcher.

## Immunogen

Amino acids QARDETKKTQND were used as the immunogen for this Radixin antibody.

## Storage

Aliquot and store the Radixin antibody at -20oC.

## References (1)