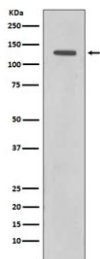


Rad21 Antibody [clone CBH-18] (RQ4748)

Catalog No.	Formulation	Size
RQ4748	Antibody in PBS with 0.02% sodium azide, 50% glycerol and 0.4-0.5mg/ml BSA	100 ul

[Bulk quote request](#)

Availability	1-2 weeks
Species Reactivity	Human
Format	Purified
Clonality	Rabbit Monoclonal
Isotype	Rabbit IgG
Clone Name	CBH-18
Purity	Affinity purified
UniProt	O60216
Applications	Western Blot : 1:500-1:1000
Limitations	This Rad21 antibody is available for research use only.



Western blot testing of human HeLa cell lysate with Rad21 antibody. Expected molecular weight: ~120 kDa (full length), 64-70 kDa (cleavage product).

Description

'Double-strand-break repair protein rad21 homolog' is a cleavable component of the cohesin complex, involved in chromosome cohesion during cell cycle, in DNA repair, and in apoptosis. The cohesin complex is required for the cohesion of sister chromatids after DNA replication. The cohesin complex apparently forms a large proteinaceous ring within which sister chromatids can be trapped. At metaphase-anaphase transition, this protein is cleaved by separase/ESPL1 and dissociates from chromatin, allowing sister chromatids to segregate. The cohesin complex may also play a role in spindle pole assembly during mitosis. Also plays a role in apoptosis, via its cleavage by caspase-3/CASP3 or caspase-7/CASP7 during early steps of apoptosis: the C-terminal 64 kDa cleavage product may act as a nuclear signal

to initiate cytoplasmic events involved in the apoptotic pathway. [UniProt]

Application Notes

Optimal dilution of the Rad21 antibody should be determined by the researcher.

Immunogen

A synthetic peptide specific to human Rad21 was used as the immunogen for the Rad21 antibody.

Storage

Store the Rad21 antibody at -20oC.