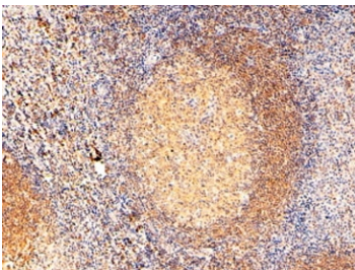


## RAC2 Antibody (R35122)

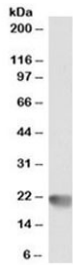
Catalog No.	Formulation	Size
R35122-100UG	0.5 mg/ml in 1X TBS, pH7.3, with 0.5% BSA (US sourced) and 0.02% sodium azide	100 ug

[Bulk quote request](#)

<b>Availability</b>	1-3 business days
<b>Species Reactivity</b>	Human
<b>Format</b>	Antigen affinity purified
<b>Host</b>	Goat
<b>Clonality</b>	Polyclonal (goat origin)
<b>Isotype</b>	Goat Ig
<b>Purity</b>	Antigen affinity
<b>Gene ID</b>	5880
<b>Localization</b>	Cytoplasmic
<b>Applications</b>	Western Blot : 0.1-1ug/ml Immunohistochemistry (FFPE) : 2-4ug/ml ELISA (peptide) LOD : 1:32000
<b>Limitations</b>	This RAC2 antibody is available for research use only.



IHC staining of FFPE human tonsil tissue with RAC2 antibody at 2ug/ml. Required HIER: steamed antigen retrieval with pH9 EDTA buffer.



Western blot testing of MOLT4 lysate with RAC2 antibody at 0.3ug/ml. Predicted molecular weight: ~21 kDa.

## Description

Additional name(s) for this target protein: Ras-related C3 botulinum toxin substrate 2

## Application Notes

Optimal dilution of the RAC2 antibody should be determined by the researcher.

## Immunogen

Amino acids PQPTRQQKRACSLI were used as the immunogen for this RAC2 antibody.

## Storage

Aliquot and store the RAC2 antibody at -20°C.