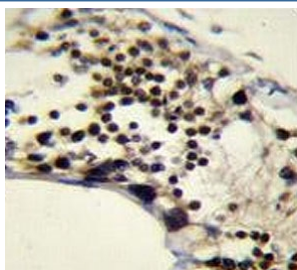


Rac GTPase-activating protein 1 Antibody / RACGAP1 (F54599)

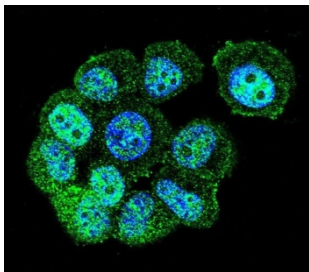
Catalog No.	Formulation	Size
F54599-0.4ML	In 1X PBS, pH 7.4, with 0.09% sodium azide	0.4 ml
F54599-0.08ML	In 1X PBS, pH 7.4, with 0.09% sodium azide	0.08 ml

[Bulk quote request](#)

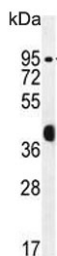
Availability	1-3 business days
Species Reactivity	Human
Format	Purified
Clonality	Polyclonal (rabbit origin)
Isotype	Rabbit Ig
Purity	Antigen affinity purified
UniProt	Q9H0H5
Localization	Nuclear, cytoplasmic
Applications	Western Blot : 1:500-1:2000 Immunohistochemistry (FFPE) : 1:25 Immunofluorescence : 1:25 Flow Cytometry : 1:25 (1x10 ⁶ cells)
Limitations	This Rac GTPase-activating protein 1 antibody is available for research use only.



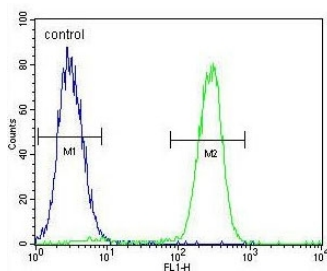
IHC testing of FFPE human testis tissue with Rac GTPase-activating protein 1 antibody.
HIER: steam section in pH6 citrate buffer for 20 min and allow to cool prior to staining.



Immunofluorescent staining of human MCF7 cells with Rac GTPase-activating protein 1 antibody (green) and DAPI nuclear stain (blue).



Western blot testing of human MCF7 cell lysate with Rac GTPase-activating protein 1 antibody. Predicted molecular weight ~71 kDa.



Flow cytometry testing of human MCF7 cells with Rac GTPase-activating protein 1 antibody; Blue=isotype control, Green= Rac GTPase-activating protein 1 antibody.

Description

Rho GTPases control a variety of cellular processes. There are 3 subtypes of Rho GTPases in the Ras superfamily of small G proteins: RHO, RAC, and CDC42. GTPase-activating proteins (GAPs) bind activated forms of Rho GTPases and stimulate GTP hydrolysis. Through this catalytic function, Rho GAPs negatively regulate Rho-mediated signals. GAPs may also serve as effector molecules and play a role in signaling downstream of Rho and other Ras-like GTPases.

Application Notes

The stated application concentrations are suggested starting points. Titration of the Rac GTPase-activating protein 1 antibody may be required due to differences in protocols and secondary/substrate sensitivity.

Immunogen

A portion of amino acids 23-50 from the human protein was used as the immunogen for the Rac GTPase-activating protein 1 antibody.

Storage

Aliquot the Rac GTPase-activating protein 1 antibody and store frozen at -20°C or colder. Avoid repeated freeze-thaw cycles.

