

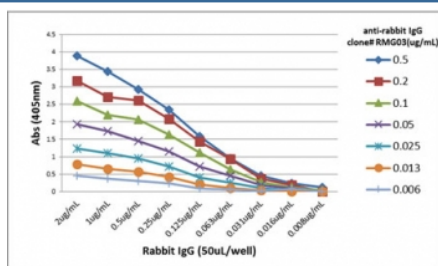
Rabbit IgG Antibody [clone RMG03] (R20478)

Catalog No.	Formulation	Size
R20478-100UG	1 mg/ml in PBS with 50% glycerol, 1% BSA and 0.09% sodium azide	100 ug

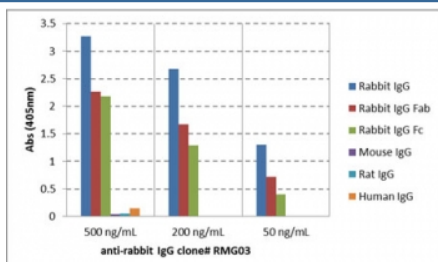
Recombinant GOAT MONOCLONAL

[Bulk quote request](#)

Availability	1-3 business days
Species Reactivity	Rabbit
Format	Purified
Host	Goat
Clonality	Recombinant Goat Monoclonal
Isotype	Goat IgG
Clone Name	RMG03
Purity	Protein A purified from animal origin-free supernatant
Applications	ELISA : 0.01ug/ml-0.5ug/ml Western Blot : 0.1ug/ml-0.5ug/ml
Limitations	This recombinant Rabbit IgG antibody is available for research use only.



A titer ELISA of rabbit IgG. The plate was coated with different amounts of rabbit IgG. A serial dilution of the recombinant Rabbit IgG antibody was used as the primary antibody. An alkaline phosphatase conjugated anti-goat IgG as the secondary antibody.



ELISA of IgGs from different species shows recombinant Rabbit IgG antibody reacts to rabbit IgG; no cross reactivity with human IgG, rat IgG, or mouse IgG. The plate was coated with 50 ng/well of different IgG. 500 ng/mL, 200 ng/mL, or 50 ng/mL of RMG03 was used as the primary antibody. An alkaline phosphatase conjugated anti-goat IgG as the secondary antibody.

Description

This antibody reacts to Rabbit IgG. No cross reactivity with human IgG, rat IgG, or mouse IgG.

Application Notes

The stated application concentrations are suggested starting points. Titration of the recombinant Rabbit IgG antibody may be required due to differences in protocols and secondary/substrate sensitivity.

Immunogen

Rabbit IgG was used as the immunogen for the Rabbit IgG antibody.

Storage

Store the recombinant Rabbit IgG antibody at -20oC.