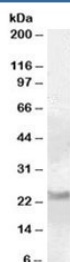


## RAB8A Antibody (R34888)

Catalog No.	Formulation	Size
R34888-100UG	0.5 mg/ml in 1X TBS, pH7.3, with 0.5% BSA (US sourced) and 0.02% sodium azide	100 ug

[Bulk quote request](#)

Availability	1-3 business days
Species Reactivity	Human
Predicted Reactivity	Cow, Dog
Format	Antigen affinity purified
Clonality	Polyclonal (goat origin)
Isotype	Goat Ig
Purity	Antigen affinity
Gene ID	4218
Applications	Western Blot : 0.1-0.3ug/ml ELISA (peptide) LOD : 1:32000
Limitations	This RAB8A antibody is available for research use only.



Western blot testing of human cerebellum lysate with RAB8A antibody at 0.1ug/ml.  
Predicted molecular weight: ~24kDa.

## Description

Additional name(s) for this target protein: Mel transforming oncogene (derived from cell line NK14)

## Application Notes

Optimal dilution of the RAB8A antibody should be determined by the researcher.

## Immunogen

Amino acids NQGVKITPDQQKR were used as the immunogen for this RAB8A antibody.

## **Storage**

Aliquot and store the RAB8A antibody at -20oC.