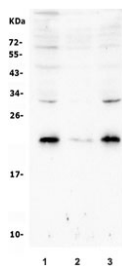


## Rab8 Antibody (R31404)

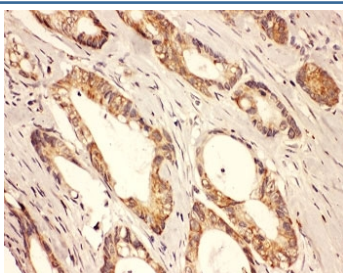
Catalog No.	Formulation	Size
R31404	0.5mg/ml if reconstituted with 0.2ml sterile DI water	100 ug

[Bulk quote request](#)

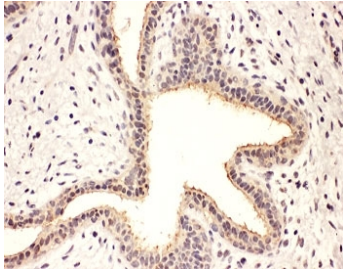
<b>Availability</b>	1-3 business days
<b>Species Reactivity</b>	Human, Mouse, Rat
<b>Format</b>	Antigen affinity purified
<b>Host</b>	Rabbit
<b>Clonality</b>	Polyclonal (rabbit origin)
<b>Isotype</b>	Rabbit IgG
<b>Purity</b>	Antigen affinity
<b>Buffer</b>	Lyophilized from 1X PBS with 2.5% BSA and 0.025% sodium azide/thimerosal
<b>UniProt</b>	P61006
<b>Applications</b>	Western Blot : 0.5-1ug/ml IHC (FFPE) : 0.5-1ug/ml
<b>Limitations</b>	This Rab8 antibody is available for research use only.



Western blot testing of human 1) Caco-2, 2) HepG2 and 3) A549 cell lysate with Rab8 antibody. Predicted molecular weight: ~24 kDa.



IHC-P: Rab8 antibody testing of human intestine cancer tissue



IHC-P: Rab8 antibody testing of human breast cancer tissue

## Description

Ras-related protein Rab8 is a protein that in humans is encoded by the RAB8A gene. The protein encoded by this gene is a member of the RAS superfamily which are small GTP/GDP-binding proteins with an average size of 200 amino acids. The RAS-related proteins of the RAB/YPT family may play a role in the transport of proteins from the endoplasmic reticulum to the Golgi and the plasma membrane. Rab8 regulates cilia assembly by targeting and promoting fusion of vesicles near the ciliary membrane. This gene requires CEP290 for centrosome localization and that CEP290 regulates entry of Rab8 into the cilium during assembly of this organelle. It has been shown to interact with Optineurin and MAP4K2.

## Application Notes

The stated application concentrations are suggested starting amounts. Titration of the Rab8 antibody may be required due to differences in protocols and secondary/substrate sensitivity.

## Immunogen

An amino acid sequence from the C-terminus of human Rab8A (KAKMDKKLEGNSPQ) was used as the immunogen for this Rab8 antibody (100% homologous in human, mouse and rat).

## Storage

After reconstitution, the Rab8 antibody can be stored for up to one month at 4°C. For long-term, aliquot and store at -20°C. Avoid repeated freezing and thawing.