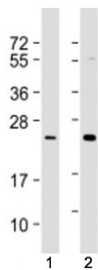


RAB7L1 Antibody / RAB29 [clone 1789CT823.71.1.1] (F54067)

Catalog No.	Formulation	Size
F54067-0.2ML	In 1X PBS, pH 7.4, with 0.09% sodium azide	0.2 ml
F54067-0.05ML	In 1X PBS, pH 7.4, with 0.09% sodium azide	0.05 ml

[Bulk quote request](#)

Availability	1-3 business days
Species Reactivity	Human
Format	Purified
Host	Mouse
Clonality	Monoclonal (mouse origin)
Isotype	Mouse IgG1
Clone Name	1789CT823.71.1.1
Purity	Protein G purified
UniProt	O14966
Applications	Western Blot : 1:1000-1:2000
Limitations	This RAB7L1 antibody is available for research use only.



Western blot testing of RAB7L1 antibody at 1:1000-1:2000: Lane 1) human Jurkat and 2) A431 cell lysate. Predicted molecular weight ~23 kDa.

Description

Rab GTPase key regulator in vesicle trafficking. Essential for maintaining the integrity of the endosome-trans- Golgi network structure. Together with LRRK2, plays a role in the retrograde trafficking pathway for recycling proteins, such as mannose 6 phosphate receptor (M6PR), between lysosomes and the Golgi apparatus in a retromer-dependent manner. Regulates neuronal process morphology in the intact central nervous system (CNS). May play a role in the formation of typhoid toxin transport intermediates during *Salmonella enterica* serovar Typhi (S.Typhi) epithelial cell infection. [UniProt]

Application Notes

The stated application concentrations are suggested starting points. Titration of the RAB7L1 antibody may be required due to differences in protocols and secondary/substrate sensitivity.

Immunogen

Recombinant human RAB7L1 was used as the immunogen for the RAB7L1 antibody.

Storage

Aliquot the RAB7L1 antibody and store frozen at -20oC or colder. Avoid repeated freeze-thaw cycles.