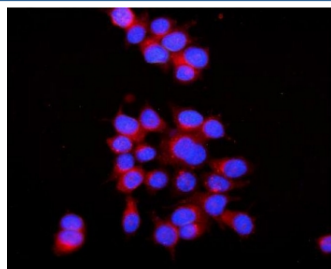


## RAB7 Antibody (R32124)

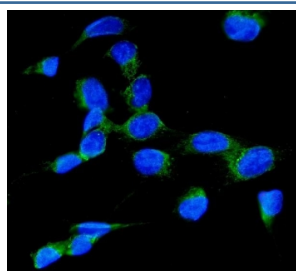
Catalog No.	Formulation	Size
R32124	0.5mg/ml if reconstituted with 0.2ml sterile DI water	100 ug

**Bulk quote request**

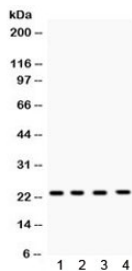
<b>Availability</b>	1-3 business days
<b>Species Reactivity</b>	Human, Mouse, Rat
<b>Format</b>	Antigen affinity purified
<b>Clonality</b>	Polyclonal (rabbit origin)
<b>Isotype</b>	Rabbit IgG
<b>Purity</b>	Antigen affinity
<b>Buffer</b>	Lyophilized from 1X PBS with 2.5% BSA and 0.025% sodium azide
<b>UniProt</b>	P51149
<b>Localization</b>	Cytoplasmic
<b>Applications</b>	Western Blot : 0.1-0.5ug/ml Immunofluorescence (FFPE) : 2-4ug/ml Flow Cytometry : 1-3ug/million cells
<b>Limitations</b>	This RAB7 antibody is available for research use only.



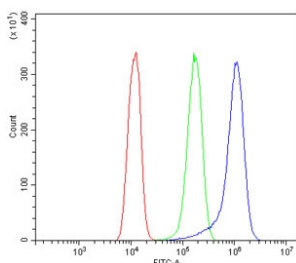
Immunofluorescent staining of FFPE human MCF7 cells with RAB7 antibody (red) and DAPI nuclear stain (blue). HIER: steam section in pH6 citrate buffer for 20 min.



Immunofluorescent staining of FFPE human U-2 OS cells with RAB7 antibody (green) and DAPI nuclear stain (blue). HIER: steam section in pH6 citrate buffer for 20 min.



Western blot testing of 1) rat brain, 2) mouse spleen, 3) human HeLa and 4) human MCF7 lysate with RAB7 antibody. Expected molecular weight ~23 kDa.



Flow cytometry testing of human A431 cells with RAB7 antibody at 1ug/million cells (blocked with goat sera); Red=cells alone, Green=isotype control, Blue= RAB7 antibody.

## Description

Ras-related protein Rab-7a is a protein that in humans is encoded by the RAB7A gene. RAB7A functions as a key regulator in endo-lysosomal trafficking, governs early-to-late endosomal maturation, microtubule minus-end as well as plus-end directed endosomal migration and positions, and endosome-lysosome transport through different protein-protein interaction cascades. Furthermore, RAB7A is involved in regulation of some specialized endosomal membrane trafficking, such as maturation of melanosomes through modulation of SOX10 and the oncogene MYC. Mutations in the lysosomal pathway result in tumor progression in melanoma cells.

## Application Notes

Optimal dilution of the RAB7 antibody should be determined by the researcher.

## Immunogen

Amino acids KEAINVEQAFQTIARNALKQETEVERLYNEFPEPIKLDKND of human RAB7A were used as the immunogen for the RAB7 antibody.

## Storage

After reconstitution, the RAB7 antibody can be stored for up to one month at 4°C. For long-term, aliquot and store at -20°C. Avoid repeated freezing and thawing.