

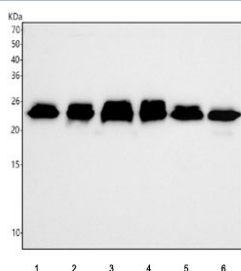
RAB5C Antibody [clone 28R55] (RQ8411)

Catalog No.	Formulation	Size
RQ8411	Antibody in PBS with 0.02% sodium azide, 50% glycerol and 0.4-0.5mg/ml BSA	100 ul

Recombinant **RABBIT MONOCLONAL**

[Bulk quote request](#)

Availability	1-3 business days
Species Reactivity	Human, Mouse, Rat
Format	Purified
Clonality	Recombinant Rabbit Monoclonal
Isotype	Rabbit IgG
Clone Name	28R55
Purity	Affinity chromatography
UniProt	P51148
Applications	Western Blot : 1:500-1:2000
Limitations	This RAB5C antibody is available for research use only.



Western blot testing of 1) human 293T, 2) human HepG2, 3) human A549, 4) human RT4, 5) rat RH35 and 6) mouse HEPA1-6 cell lysate with RAB5C antibody. Predicted molecular weight ~23 kDa.

Description

RAB5C belongs to the Ras-related protein family and is involved in protein transport.

Application Notes

Optimal dilution of the RAB5C antibody should be determined by the researcher.

Immunogen

A synthetic peptide derived from human RAB5C / RABL was used as the immunogen for the RAB5C antibody.

Storage

Store the RAB5C antibody at -20oC.