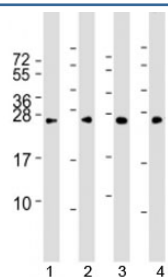


RAB5B Antibody [clone 1615CT668.28.45] (F53800)

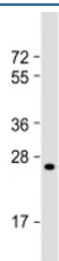
Catalog No.	Formulation	Size
F53800-0.2ML	In 1X PBS, pH 7.4, with 0.09% sodium azide	0.2 ml
F53800-0.05ML	In 1X PBS, pH 7.4, with 0.09% sodium azide	0.05 ml

[Bulk quote request](#)

Availability	1-3 business days
Species Reactivity	Human, Mouse
Format	Purified
Host	Mouse
Clonality	Monoclonal (mouse origin)
Isotype	Mouse IgG1, kappa
Clone Name	1615CT668.28.45
Purity	Protein G affinity chromatography
UniProt	P61020
Applications	Western Blot : 1:1000-2000
Limitations	This RAB5B antibody is available for research use only.



Western blot testing of human 1) HeLa, 2) HepG2, 3) Jurkat and 4) mouse NIH3T3 cell lysate with RAB5B antibody at 1:2000. Predicted molecular weight: 24 kDa.



Western blot testing of human A431 cell lysate with RAB5B antibody at 1:2000. Predicted molecular weight: 24 kDa.

Description

RAB5B is involved in protein transport and likely involved in vesicular traffic.

Application Notes

Titration of the RAB5B antibody may be required due to differences in protocols and substrate sensitivity.

Immunogen

Human recombinant protein was used as the immunogen for this RAB5B antibody.

Storage

Aliquot the RAB5B antibody and store frozen at -20oC or colder. Avoid repeated freeze-thaw cycles.