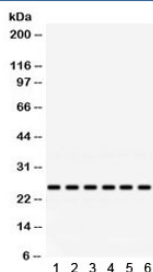


## RAB5 Antibody (R32002)

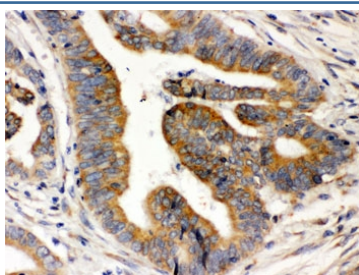
Catalog No.	Formulation	Size
R32002	0.5mg/ml if reconstituted with 0.2ml sterile DI water	100 ug

**Bulk quote request**

<b>Availability</b>	1-3 business days
<b>Species Reactivity</b>	Human, Mouse, Rat
<b>Format</b>	Antigen affinity purified
<b>Clonality</b>	Polyclonal (rabbit origin)
<b>Isotype</b>	Rabbit IgG
<b>Purity</b>	Antigen affinity
<b>Buffer</b>	Lyophilized from 1X PBS with 2.5% BSA and 0.025% sodium azide
<b>UniProt</b>	P20339
<b>Localization</b>	Cytoplasmic
<b>Applications</b>	Western Blot : 0.1-0.5ug/ml IHC (FFPE) : 0.5-1ug/ml
<b>Limitations</b>	This RAB5 antibody is available for research use only.



Western blot testing of 1) rat brain, 2) mouse brain, and human 3) HeLa, 4) SW620, 5) 293 and 6) Jurkat lysate with RAB5 antibody. Expected/observed molecular weight ~25 kDa.



IHC testing of FFPE human intestinal cancer tissue with RAB5 antibody. HIER: Boil the paraffin sections in pH 6, 10mM citrate buffer for 20 minutes and allow to cool prior to staining.

## Description

RAB5A (Ras-associated protein RAB5A), also called RAB5, is a protein that in humans is encoded by the RAB5A gene. RAB5 is a rate-limiting component of the machinery regulating the kinetics of membrane traffic in the early endocytic pathway. The RAB5A gene is mapped on 3p24.3. RAB5 is indispensable for a form of receptor tyrosine kinase-induced actin remodeling called circular ruffling. It signals to the actin cytoskeleton through RNTRE, a RAB5-specific GTPase-activating protein (GAP). RAB5 activity on phagosome membranes began to increase on disassembly of the actin coat encapsulating phagosomes.

## Application Notes

Optimal dilution of the RAB5 antibody should be determined by the researcher.

## Immunogen

Amino acids KKLPKNEPQNPGANSARGRGVDLTEPTQPTRNQCCSN of human RAB5A were used as the immunogen for the RAB5 antibody.

## Storage

After reconstitution, the RAB5 antibody can be stored for up to one month at 4°C. For long-term, aliquot and store at -20°C. Avoid repeated freezing and thawing.