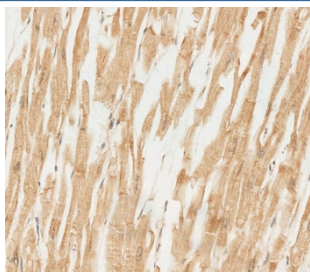


RAB28 Antibody (F54708)

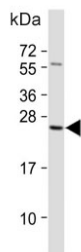
Catalog No.	Formulation	Size
F54708-0.4ML	In 1X PBS, pH 7.4, with 0.09% sodium azide	0.4 ml
F54708-0.08ML	In 1X PBS, pH 7.4, with 0.09% sodium azide	0.08 ml

[Bulk quote request](#)

Availability	1-3 business days
Species Reactivity	Human
Format	Purified
Host	Rabbit
Clonality	Polyclonal (rabbit origin)
Isotype	Rabbit Ig
Purity	Antigen affinity purified
UniProt	P51157
Localization	Cytoplasmic
Applications	Western Blot : 1:500-1:2000 Flow Cytometry : 1:25 (1x10 ⁶ cells) Immunohistochemistry (FFPE) : 1:25
Limitations	This RAB28 antibody is available for research use only.



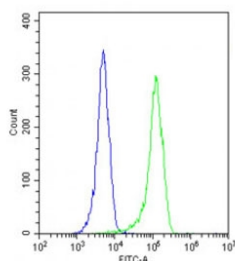
IHC testing of FFPE human kidney tissue with RAB28 antibody. HIER: steam section in pH9 EDTA for 20 min and allow to cool prior to staining.



Western blot testing of human kidney tissue lysate with RAB28 antibody. Expected molecular weight: 25-30 kDa.



Western blot testing of human A2058 cell lysate with RAB28 antibody. Expected molecular weight: 25-30 kDa.



Flow cytometry testing of fixed and permeabilized human A2058 cells with RAB28 antibody; Blue=isotype control, Green= RAB28 antibody.

Description

This gene encodes a member of the Rab subfamily of Ras-related small GTPases. The encoded protein may be involved in regulating intracellular trafficking. Alternative splicing results in multiple transcript variants. Pseudogenes of this gene are found on chromosomes 9 and X.

Application Notes

The stated application concentrations are suggested starting points. Titration of the RAB28 antibody may be required due to differences in protocols and secondary/substrate sensitivity.

Immunogen

A portion of amino acids 119-147 from the human protein was used as the immunogen for the RAB28 antibody.

Storage

Aliquot the RAB28 antibody and store frozen at -20oC or colder. Avoid repeated freeze-thaw cycles.

