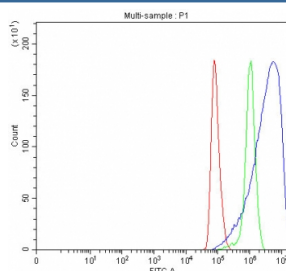


RAB14 Antibody (RQ8524)

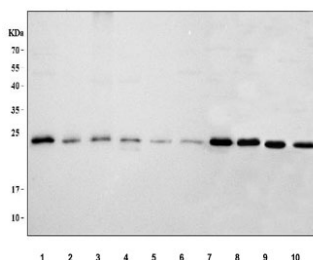
Catalog No.	Formulation	Size
RQ8524	0.5mg/ml if reconstituted with 0.2ml sterile DI water	100 ug

Bulk quote request

Availability	1-3 days
Species Reactivity	Human, Mouse, Rat
Format	Antigen affinity purified
Clonality	Polyclonal (rabbit origin)
Isotype	Rabbit IgG
Purity	Antigen affinity purified
Buffer	Lyophilized from 1X PBS with 2% Trehalose
UniProt	P61106
Applications	Western Blot : 0.5-1ug/ml Flow Cytometry : 1-3ug/million cells ELISA : 0.1-0.5ug/ml
Limitations	This RAB14 antibody is available for research use only.



Flow cytometry testing of fixed and permeabilized human HeLa cells with RAB14 antibody at 1ug/million cells (blocked with goat sera); Red=cells alone, Green=isotype control, Blue= RAB14 antibody.



Western blot testing of 1) human HeLa, 2) human PC-3, 3) human T-47D, 4) human A549, 5) human A431, 6) human U-937, 7) human MCF7, 8) rat brain, 9) mouse brain and 10) mouse lung tissue lysate with RAB14 antibody. Predicted molecular weight ~24 kDa.

Description

Ras-related protein Rab-14 is a protein that in humans is encoded by the RAB14 gene. It is mapped to 9q33.2 based on an alignment of the RAB14 sequence with the genomic sequence. RAB14 belongs to the large RAB family of low molecular mass GTPases that are involved in intracellular membrane trafficking. These proteins act as molecular switches that flip between an inactive GDP-bound state and an active GTP-bound state in which they recruit downstream effector proteins onto membranes.

Application Notes

Optimal dilution of the RAB14 antibody should be determined by the researcher.

Immunogen

An E.coli-derived human recombinant protein (amino acids D108-C215) was used as the immunogen for the RAB14 antibody.

Storage

After reconstitution, the RAB14 antibody can be stored for up to one month at 4°C. For long-term, aliquot and store at -20°C. Avoid repeated freezing and thawing.