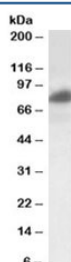


RAB11FIP1 Antibody (R33719)

Catalog No.	Formulation	Size
R33719-100UG	0.5 mg/ml in 1X TBS, pH7.3, with 0.5% BSA (US sourced) and 0.02% sodium azide	100 ug

[Bulk quote request](#)

Availability	1-3 business days
Species Reactivity	Human
Format	Antigen affinity purified
Host	Goat
Clonality	Polyclonal (goat origin)
Isotype	Goat Ig
Purity	Antigen affinity
Gene ID	80223
Applications	Western Blot : 0.2-1ug/ml ELISA (peptide) LOD : 1:64000
Limitations	This RAB11FIP1 antibody is available for research use only.



Western blot testing of HeLa lysate with RAB11FIP1 antibody at 0.2ug/ml. Predicted molecular weight: ~71kDa, routinely observed at 80~90kDa.

Description

Additional name(s) for this target protein: RAB11 family interacting protein 1

Application Notes

Optimal dilution of the RAB11FIP1 antibody should be determined by the researcher.

1. This RAB11FIP1 antibody is specific for isoforms 1 and 3.

Immunogen

Amino acids EATKEAKESKKPE were used as the immunogen for this RAB11FIP1 antibody. This sequence is common to isoforms 1 (649 AA) and 3 (1283 AA).

Storage

Aliquot and store the RAB11FIP1 antibody at -20oC.