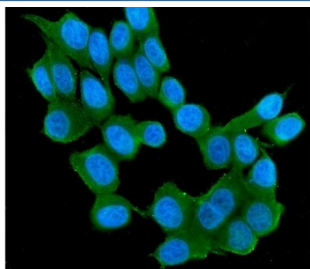


RAB11B Antibody [clone 6C5] (RQ5671)

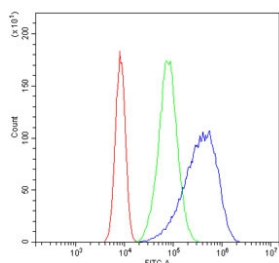
Catalog No.	Formulation	Size
RQ5671	0.5mg/ml if reconstituted with 0.2ml sterile DI water	100 ug

Bulk quote request

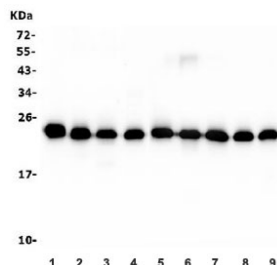
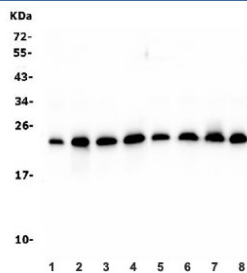
Availability	1-3 business days
Species Reactivity	Human, Mouse, Rat
Format	Antigen affinity purified
Clonality	Monoclonal
Isotype	Mouse IgG2b
Clone Name	6C5
Purity	Affinity purified
Buffer	Lyophilized from 1X PBS with 2% Trehalose and 0.025% sodium azide
UniProt	Q15907
Applications	Western Blot : 0.5-1ug/ml Immunofluorescence : 2-4ug/ml Flow Cytometry : 1-3ug/million cells
Limitations	This RAB11B antibody is available for research use only.



Immunofluorescent staining of FFPE human MCF7 cells with RAB11B antibody (green) and DAPI nuclear stain (blue). HIER: steam section in pH6 citrate buffer for 20 min.



Flow cytometry testing of human Caco-2 cells with RAB11B antibody at 1ug/million cells (blocked with goat sera); Red=cells alone, Green=isotype control, Blue= RAB11B antibody.



Description

Ras-related protein Rab-11B is a protein that in humans is encoded by the RAB11B gene. It is mapped to 19p13.2. The Ras superfamily of small GTP-binding proteins, which includes the Ras, Ral, Rho, Rap, and Rab families, is involved in controlling a diverse set of essential cellular functions. The Rab family, including RAB11B, appears to play a critical role in regulating exocytotic and endocytotic pathways.

Application Notes

Optimal dilution of the RAB11B antibody should be determined by the researcher.

Immunogen

Amino acids QKQIADRAAHDESPGNNVVDISVPPTTDGQKPNKLQCC from the human protein were used as the immunogen for the RAB11B antibody.

Storage

After reconstitution, the RAB11B antibody can be stored for up to one month at 4°C. For long-term, aliquot and store at -20°C. Avoid repeated freezing and thawing.