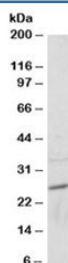


RAB11A Antibody (R36163)

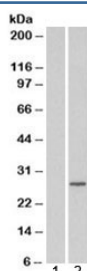
Catalog No.	Formulation	Size
R36163-100UG	0.5 mg/ml in 1X TBS, pH7.3, with 0.5% BSA (US sourced) and 0.02% sodium azide	100 ug

[Bulk quote request](#)

Availability	1-3 business days
Species Reactivity	Human, Mouse
Predicted Reactivity	Cow, Rat
Format	Antigen affinity purified
Host	Goat
Clonality	Polyclonal (goat origin)
Isotype	Goat Ig
Purity	Antigen affinity
Gene ID	8766
Applications	Western Blot : 2-4ug/ml ELISA (peptide) LOD : 1:32000
Limitations	This RAB11A antibody is available for research use only.



Western blot testing of mouse heart lysate at 2ug/ml. Predicted molecular weight: ~25kDa.



Western blot of HEK293 lysate overexpressing RAB11A and probed with RAB11A antibody (mock transfection in lane 1). Predicted molecular weight: ~25kDa.

Description

Additional name(s) for this target protein: Ras related protein Rab 11A

Application Notes

Optimal dilution of the RAB11A antibody should be determined by the researcher.

Immunogen

Amino acids TENKPKVQCCQNI were used as the immunogen for this RAB11A antibody.

Storage

Aliquot and store the RAB11A antibody at -20oC.