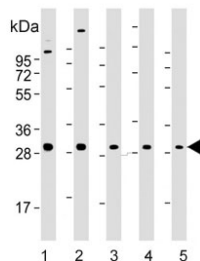


Rab-23 Antibody / RAB23 [clone 427CT2.1.1] (F54523)

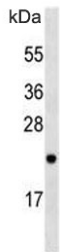
Catalog No.	Formulation	Size
F54523-0.4ML	In 1X PBS, pH 7.4, with 0.09% sodium azide	0.4 ml
F54523-0.08ML	In 1X PBS, pH 7.4, with 0.09% sodium azide	0.08 ml

[Bulk quote request](#)

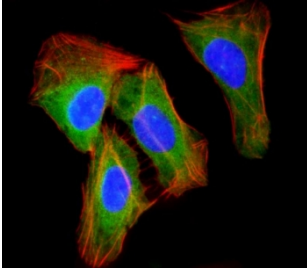
Availability	1-3 business days
Species Reactivity	Human, Mouse
Format	Purified
Host	Mouse
Clonality	Monoclonal (mouse origin)
Isotype	IgG1
Clone Name	427CT2.1.1
Purity	Protein G affinity
UniProt	Q9ULC3
Applications	Western Blot : 1:500-1:2000 Flow Cytometry : 1:25 (1x10e6 cells) Immunofluorescence : 1:25
Limitations	This Rab-23 antibody is available for research use only.



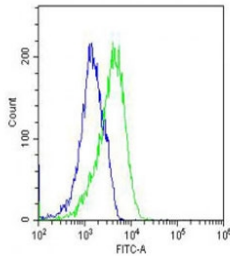
Western blot testing of 1) human brain, 2) mouse brain, 3) human MDA-MB-231, 4) mouse cerebellum and 5) human cerebellum lysate with Rab-23 antibody. Predicted molecular weight: ~27 kDa.



Western blot testing of mouse brain lysate with Rab-23 antibody. Predicted molecular weight: ~27 kDa.



Immunofluorescent staining of fixed and permeabilized human U-2 OS cells with Rab-23 antibody (green), DAPI nuclear stain (blue) and anti-Actin (red).



Flow cytometry testing of fixed and permeabilized human U-2 OS cells with Rab-23 antibody; Blue=isotype control, Green= Rab-23 antibody.

Description

The protein encoded by this gene belongs to the small GTPase superfamily, Rab family. It may be involved in small GTPase mediated signal transduction and intracellular protein transportation. Alternative splicing occurs at this locus and two transcript variants encoding the same protein have been identified.

Application Notes

The stated application concentrations are suggested starting points. Titration of the Rab-23 antibody may be required due to differences in protocols and secondary/substrate sensitivity.

Immunogen

Recombinant human protein (amino acids 1-197) was used as the immunogen for the Rab-23 antibody.

Storage

Aliquot the Rab-23 antibody and store frozen at -20oC or colder. Avoid repeated freeze-thaw cycles.

