

QTRTD1 Antibody / QTRT2 (F54609)

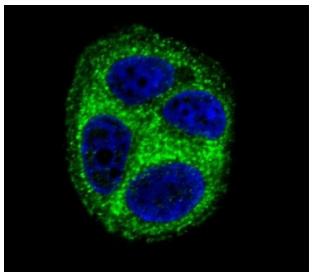
Catalog No.	Formulation	Size
F54609-0.4ML	In 1X PBS, pH 7.4, with 0.09% sodium azide	0.4 ml
F54609-0.08ML	In 1X PBS, pH 7.4, with 0.09% sodium azide	0.08 ml

Bulk quote request

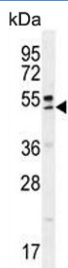
Availability	1-3 business days
Species Reactivity	Human
Format	Purified
Clonality	Polyclonal (rabbit origin)
Isotype	Rabbit Ig
Purity	Antigen affinity purified
UniProt	Q9H974
Localization	Cytoplasmic
Applications	Flow Cytometry : 1:25 (1x10 ⁶ cells) Immunofluorescence : 1:25 Immunohistochemistry (FFPE) : 1:25 Western Blot : 1:500-1:2000
Limitations	This QTRTD1 antibody is available for research use only.



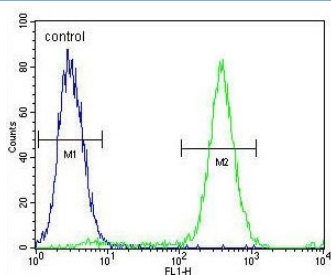
IHC testing of FFPE human breast tissue with QTRTD1 antibody. HIER: steam section in pH6 citrate buffer for 20 min and allow to cool prior to staining.



Immunofluorescent staining of human MCF7 cells with QTRTD1 antibody (green) and DAPI nuclear stain (blue).



Western blot testing of human MCF7 cell lysate with QTRTD1 antibody. Predicted molecular weight ~47 kDa.



Flow cytometry testing of human MCF7 cells with QTRTD1 antibody; Blue=isotype control, Green= QTRTD1 antibody.

Description

Interacts with QTRT1 to form an active queuine tRNA-ribosyltransferase. This enzyme exchanges queuine for the guanine at the wobble position of tRNAs with GU(N) anticodons (tRNA-Asp, -Asn, -His and -Tyr), thereby forming the hypermodified nucleoside queuosine (Q) (7-(((4,5-cis-dihydroxy-2-cyclopenten-1-yl)amino)methyl)-7-deazaguanosine) (UniProt).

Application Notes

The stated application concentrations are suggested starting points. Titration of the QTRTD1 antibody may be required due to differences in protocols and secondary/substrate sensitivity.

Immunogen

A portion of amino acids 321-350 from the human protein was used as the immunogen for the QTRTD1 antibody.

Storage

Aliquot the QTRTD1 antibody and store frozen at -20oC or colder. Avoid repeated freeze-thaw cycles.

