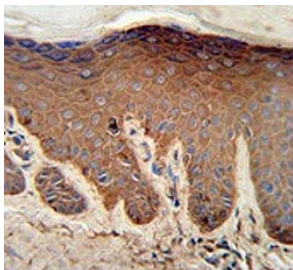


Pyruvate Kinase PKM Antibody / PKM2 (F54909)

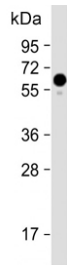
Catalog No.	Formulation	Size
F54909-0.4ML	In 1X PBS, pH 7.4, with 0.09% sodium azide	0.4 ml
F54909-0.08ML	In 1X PBS, pH 7.4, with 0.09% sodium azide	0.08 ml

[Bulk quote request](#)

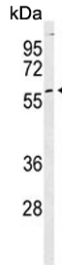
Availability	1-3 business days
Species Reactivity	Human
Format	Purified
Host	Rabbit
Clonality	Polyclonal (rabbit origin)
Isotype	Rabbit Ig
Purity	Purified
UniProt	P14618
Localization	Cytoplasmic, nuclear
Applications	Flow Cytometry : 1:10-1:50 (1x10e6 cells) Immunohistochemistry (FFPE) : 1:50-1:100 Western Blot : 1:500-1:1000
Limitations	This Pyruvate Kinase PKM antibody is available for research use only.



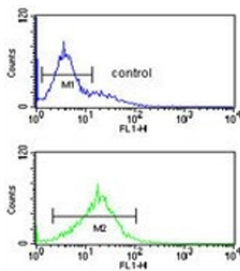
IHC testing of FFPE human skin tissue with Pyruvate Kinase PKM antibody. HIER: steam section in pH6 citrate buffer for 20 min and allow to cool prior to staining.



Western blot testing of human HeLa cell lysate with Pyruvate Kinase PKM antibody.
 Predicted molecular weight ~58 kDa.



Western blot testing of human K562 cell lysate with Pyruvate Kinase PKM antibody.
 Predicted molecular weight ~58 kDa.



Flow cytometry testing of human K562 cells with Pyruvate Kinase PKM antibody;
 Blue=isotype control, Green= Pyruvate Kinase PKM antibody.

Description

PKM2 is a pyruvate kinase that catalyzes the production of phosphoenolpyruvate from pyruvate and ATP. This protein has been shown to interact with thyroid hormone, and thus may mediate cellular metabolic effects induced by thyroid hormones. This protein has been found to bind Opa protein, a bacterial outer membrane protein involved in gonococcal adherence to and invasion of human cells, suggesting a role of this protein in bacterial pathogenesis.

Application Notes

The stated application concentrations are suggested starting points. Titration of the Pyruvate Kinase PKM antibody may be required due to differences in protocols and secondary/substrate sensitivity.

Immunogen

A portion of amino acids 383-417 from the human protein was used as the immunogen for the Pyruvate Kinase PKM antibody.

Storage

Aliquot the Pyruvate Kinase PKM antibody and store frozen at -20°C or colder. Avoid repeated freeze-thaw cycles.

