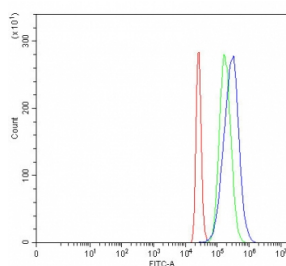


## Pyruvate dehydrogenase kinase 1 Antibody / PDK1 (RQ8541)

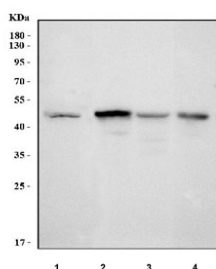
Catalog No.	Formulation	Size
RQ8541	0.5mg/ml if reconstituted with 0.2ml sterile DI water	100 ug

**Bulk quote request**

<b>Availability</b>	1-3 days
<b>Species Reactivity</b>	Human, Mouse, Rat
<b>Format</b>	Antigen affinity purified
<b>Host</b>	Rabbit
<b>Clonality</b>	Polyclonal (rabbit origin)
<b>Isotype</b>	Rabbit IgG
<b>Purity</b>	Antigen affinity purified
<b>Buffer</b>	Lyophilized from 1X PBS with 2% Trehalose
<b>UniProt</b>	Q15118
<b>Applications</b>	Western Blot : 0.5-1ug/ml Flow Cytometry : 1-3ug/million cells ELISA : 0.1-0.5ug/ml
<b>Limitations</b>	This Pyruvate dehydrogenase kinase 1 antibody is available for research use only.



Flow cytometry testing of fixed and permeabilized human 293T cells with Pyruvate dehydrogenase kinase 1 antibody at 1ug/million cells (blocked with goat sera); Red=cells alone, Green=isotype control, Blue= Pyruvate dehydrogenase kinase 1 antibody.



Western blot testing of 1) human 293T, 2) rat heart, 3) rat RH35 and 4) mouse heart tissue lysate with Pyruvate dehydrogenase kinase 1 antibody. Predicted molecular weight ~49 kDa.

## Description

Pyruvate dehydrogenase lipoamide kinase isozyme 1, mitochondrial is an enzyme that in humans is encoded by the PDK1 gene. Pyruvate dehydrogenase (PDH) is a mitochondrial multienzyme complex that catalyzes the oxidative decarboxylation of pyruvate and is one of the major enzymes responsible for the regulation of homeostasis of carbohydrate fuels in mammals. The enzymatic activity is regulated by a phosphorylation/dephosphorylation cycle. Phosphorylation of PDH by a specific pyruvate dehydrogenase kinase (PDK) results in inactivation. Multiple alternatively spliced transcript variants have been found for this gene.

## Application Notes

Optimal dilution of the Pyruvate dehydrogenase kinase 1 antibody should be determined by the researcher.

## Immunogen

An E.coli-derived human recombinant protein (amino acids Y114-A436) was used as the immunogen for the Pyruvate dehydrogenase kinase 1 antibody.

## Storage

After reconstitution, the Pyruvate dehydrogenase kinase 1 antibody can be stored for up to one month at 4oC. For long-term, aliquot and store at -20oC. Avoid repeated freezing and thawing.