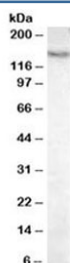


Pyruvate Carboxylase Antibody (R34431)

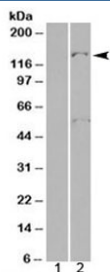
Catalog No.	Formulation	Size
R34431-100UG	0.5 mg/ml in 1X TBS, pH7.3, with 0.5% BSA (US sourced) and 0.02% sodium azide	100 ug

[Bulk quote request](#)

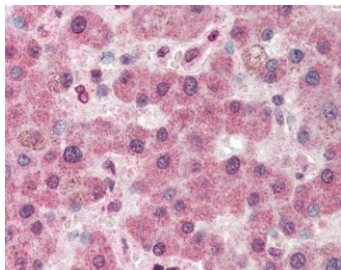
Availability	1-3 business days
Species Reactivity	Human, Mouse
Predicted Reactivity	Cow, Dog, Pig, Rat
Format	Antigen affinity purified
Host	Goat
Clonality	Polyclonal (goat origin)
Isotype	Goat Ig
Purity	Antigen affinity
Gene ID	5091
Applications	Western Blot : 0.03-0.1ug/ml IHC (FFPE) : 5ug/ml ELISA (peptide) LOD : 1:16000
Limitations	This Pyruvate Carboxylase antibody is available for research use only.



Western blot testing of mouse liver lysate with Pyruvate Carboxylase antibody at 0.03ug/ml. Predicted molecular weight: ~130 kDa, observed here at 140~150 kDa.



Western blot of HEK293 lysate overexpressing human Pyruvate Carboxylase probed with Pyruvate Carboxylase antibody (mock transfection in lane 1). Predicted molecular weight: ~130 kDa, observed here at 140~150 kDa.



IHC testing of FFPE human liver tissue with Pyruvate Carboxylase antibody at 5ug/ml. HIER: steamed antigen retrieval with pH6 citrate buffer; AP-staining.

Description

Additional name(s) for this target protein: PCB; PC

Application Notes

Optimal dilution of the Pyruvate Carboxylase antibody should be determined by the researcher.

Immunogen

Amino acids KFKEVKKAYVEANQ were used as the immunogen for this Pyruvate Carboxylase antibody.

Storage

Aliquot and store the Pyruvate Carboxylase antibody at -20oC.