

PXR Antibody / NR1I2 (F54461)

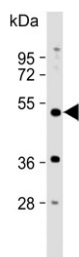
Catalog No.	Formulation	Size
F54461-0.4ML	In 1X PBS, pH 7.4, with 0.09% sodium azide	0.4 ml
F54461-0.08ML	In 1X PBS, pH 7.4, with 0.09% sodium azide	0.08 ml

[Bulk quote request](#)

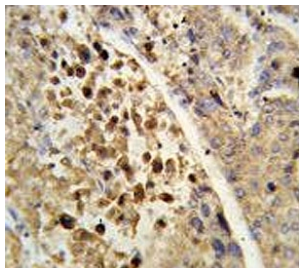
Availability	1-3 business days
Species Reactivity	Human
Format	Purified
Host	Rabbit
Clonality	Polyclonal (rabbit origin)
Isotype	Rabbit Ig
Purity	Antigen affinity purified
UniProt	O75469
Localization	Nuclear
Applications	Immunofluorescence : 1:25 Flow Cytometry : 1:25 (1x10 ⁶ cells) Immunohistochemistry (FFPE) : 1:25 Western Blot : 1:500-1:2000
Limitations	This PXR antibody is available for research use only.



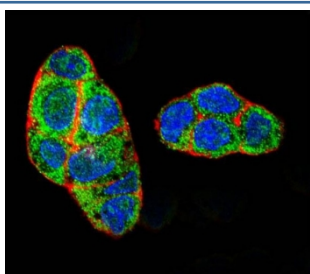
Western blot testing of human HL60 cell lysate with PXR antibody. Predicted molecular weight ~50 kDa.



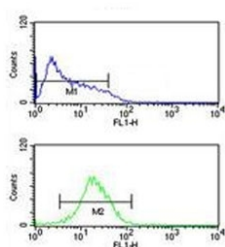
Western blot testing of human HeLa cell lysate with PXR antibody. Predicted molecular weight ~50 kDa.



IHC testing of FFPE human hepatocarcinoma tissue with PXR antibody. HIER: steam section in pH6 citrate buffer for 20 min and allow to cool prior to staining.



Immunofluorescent staining of fixed and permeabilized human HepG2 cells with PXR antibody (green), DAPI nuclear stain (blue) and anti-Actin (red).



Flow cytometry testing of human HL60 cells with PXR antibody; Blue=isotype control, Green= PXR antibody.

Description

NR1I2/PXR belongs to the nuclear receptor superfamily, members of which are transcription factors characterized by a ligand-binding domain and a DNA-binding domain. This protein is a transcriptional regulator of the cytochrome P450 gene CYP3A4, binding to the response element of the CYP3A4 promoter as a heterodimer with the 9-cis retinoic acid receptor RXR. It is activated by a range of compounds that induce CYP3A4, including dexamethasone and rifampicin.

Application Notes

The stated application concentrations are suggested starting points. Titration of the PXR antibody may be required due to differences in protocols and secondary/substrate sensitivity.

Immunogen

A portion of amino acids 100-127 from the human protein was used as the immunogen for the PXR antibody.

Storage

Aliquot the PXR antibody and store frozen at -20oC or colder. Avoid repeated freeze-thaw cycles.

