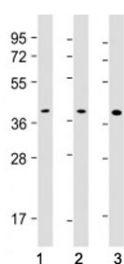


PU.1 Antibody [clone 1835CT291.10.52] (F54093)

Catalog No.	Formulation	Size
F54093-0.2ML	In 1X PBS, pH 7.4, with 0.09% sodium azide	0.2 ml
F54093-0.05ML	In 1X PBS, pH 7.4, with 0.09% sodium azide	0.05 ml

[Bulk quote request](#)

Availability	1-3 business days
Species Reactivity	Human
Format	Purified
Host	Mouse
Clonality	Monoclonal (mouse origin)
Isotype	Mouse IgG1, kappa
Clone Name	1835CT291.10.52
Purity	Protein G purified
UniProt	P17947
Applications	Western Blot : 1:500
Limitations	This PU.1 antibody is available for research use only.



Western blot testing of PU.1 antibody at 1:500: Lane 1) human K562, 2) Daudi and 3) THP1 cell lysate. Predicted molecular weight ~31 kDa but routinely observed at ~40 kDa.

Description

Transcription factor PU.1 binds to the PU-box, a purine-rich DNA sequence (5'- GAGGAA-3') that can act as a lymphoid-specific enhancer. This protein is a transcriptional activator that may be specifically involved in the differentiation or activation of macrophages or B- cells. Also binds RNA and may modulate pre-mRNA splicing (By similarity). [UniProt]

Application Notes

The stated application concentrations are suggested starting points. Titration of the PU.1 antibody may be required due to differences in protocols and secondary/substrate sensitivity.

Immunogen

Recombinant human SPI1/PU.1 was used as the immunogen for the PU.1 antibody.

Storage

Aliquot the PU.1 antibody and store frozen at -20oC or colder. Avoid repeated freeze-thaw cycles.