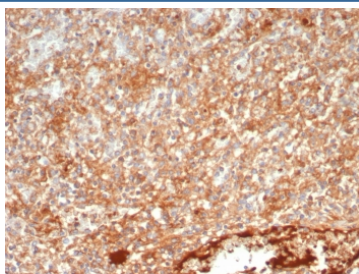


## PTPN6 Antibody / SHP-1 / PTP1C [clone PTPN6/7543] (V4251)

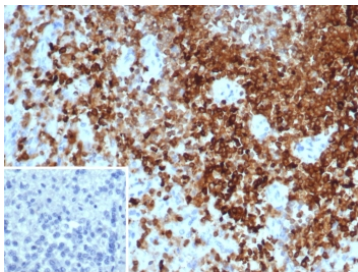
Catalog No.	Formulation	Size
V4251-100UG	0.2 mg/ml in 1X PBS with 0.1 mg/ml BSA (US sourced), 0.05% sodium azide	100 ug
V4251-20UG	0.2 mg/ml in 1X PBS with 0.1 mg/ml BSA (US sourced), 0.05% sodium azide	20 ug
V4251SAF-100UG	1 mg/ml in 1X PBS; BSA free, sodium azide free	100 ug

[Bulk quote request](#)

<b>Availability</b>	1-3 business days
<b>Species Reactivity</b>	Human
<b>Format</b>	Purified
<b>Host</b>	Mouse
<b>Clonality</b>	Monoclonal (mouse origin)
<b>Isotype</b>	Mouse IgG1, kappa
<b>Clone Name</b>	PTPN6/7543
<b>Purity</b>	Protein A/G affinity
<b>UniProt</b>	P29350
<b>Localization</b>	Cytoplasm, Nucleus
<b>Applications</b>	Immunohistochemistry (FFPE) : 1-2ug/ml for 30 minutes at RT
<b>Limitations</b>	This PTPN6 antibody is available for research use only.



IHC staining of FFPE human spleen tissue with PTPN6 antibody (clone PTPN6/7543).  
HIER: boil tissue sections in pH 9 10mM Tris with 1mM EDTA for 20 min and allow to cool before testing.



IHC staining of FFPE human spleen tissue with PTPN6 antibody (clone PTPN6/7543). Inset: PBS used in place of primary Ab (secondary Ab negative control). HIER: boil tissue sections in pH 9 10mM Tris with 1mM EDTA for 20 min and allow to cool before testing.

## Description

PTPN6, which is also designated as SHP-1, is expressed primarily in hematopoietic cells and characterized by the presence of two SH2 domains N-terminal to the PTP domain. It maps to 12p13, a region commonly involved in leukemia-associated chromosomal abnormalities. SHP-1 plays a role in modulating intracellular signaling for various molecules. In T-cell lymphomas and other malignancies, SHP-1 phosphatase expression is lost, by a thus far undetermined mechanism. Preliminary studies suggest that it may be helpful in differentiating mantle/marginal zone lymphomas (SHP-1+) from follicular lymphomas (SHP-1 negative).

## Application Notes

Optimal dilution of the SHP-1 antibody should be determined by the researcher.

## Immunogen

A recombinant partial protein sequence (within amino acids 395-595) from the human protein was used as the immunogen for the PTPN6 antibody.

## Storage

Aliquot the SHP-1 antibody and store frozen at -20oC or colder. Avoid repeated freeze-thaw cycles.