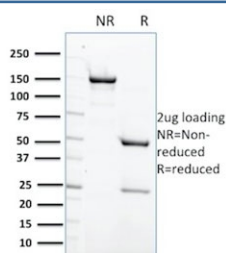


PTPN6 Antibody / SHP-1 [clone CPTC-PTPN6-2] (V8041)

Catalog No.	Formulation	Size
V8041-100UG	0.2 mg/ml in 1X PBS with 0.1 mg/ml BSA (US sourced) and 0.05% sodium azide	100 ug
V8041-20UG	0.2 mg/ml in 1X PBS with 0.1 mg/ml BSA (US sourced) and 0.05% sodium azide	20 ug
V8041SAF-100UG	1 mg/ml in 1X PBS; BSA free, sodium azide free	100 ug

[Bulk quote request](#)

Availability	1-3 business days
Species Reactivity	Human
Format	Purified
Host	Mouse
Clonality	Monoclonal (mouse origin)
Isotype	Mouse IgG2a, kappa
Clone Name	CPTC-PTPN6-2
Purity	Protein G affinity chromatography
UniProt	P29350
Applications	Western Blot : 1-2ug/ml
Limitations	This PTPN6 antibody is available for research use only.



SDS-PAGE analysis of purified, BSA-free PTPN6 antibody (clone CPTC-PTPN6-2) as confirmation of integrity and purity.

Description

PTPN6, which is also designated as SHP-1, is expressed primarily in hematopoietic cells and characterized by the presence of two SH2 domains N-terminal to the PTP domain. It maps to 12p13, a region commonly involved in leukemia-

associated chromosomal abnormalities. SHP-1 plays a role in modulating intracellular signaling for various molecules. In T-cell lymphomas and other malignancies, SHP-1 phosphatase expression is lost, by a thus far undetermined mechanism. Preliminary studies suggest that it may be helpful in differentiating mantle/marginal zone lymphomas (SHP-1+) from follicular lymphomas (SHP-1 negative).

Application Notes

Optimal dilution of the PTPN6 antibody should be determined by the researcher.

Immunogen

Recombinant human full-length PTPN6 protein was used as the immunogen for the PTPN6 antibody.

Storage

Store the PTPN6 antibody at 2-8oC (with azide) or aliquot and store at -20oC or colder (without azide).