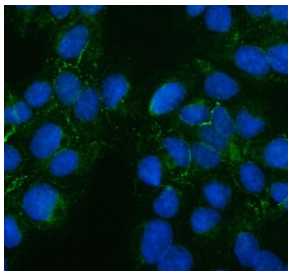


PTH2R Antibody / Parathyroid hormone 2 receptor (RQ8404)

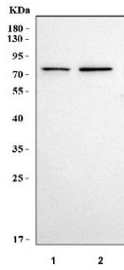
Catalog No.	Formulation	Size
RQ8404	0.5mg/ml if reconstituted with 0.2ml sterile DI water	100 ug

Bulk quote request

Availability	1-3 business days
Species Reactivity	Human
Format	Antigen affinity purified
Host	Rabbit
Clonality	Polyclonal (rabbit origin)
Isotype	Rabbit IgG
Purity	Antigen affinity purified
Buffer	Lyophilized from 1X PBS with 2% Trehalose
UniProt	P49190
Localization	Cell membrane
Applications	Western Blot : 0.5-1ug/ml Immunofluorescence : 5ug/ml Direct ELISA : 0.1-0.5ug/ml
Limitations	This PTH2R antibody is available for research use only.



Immunofluorescent staining of FFPE human U-2 OS cells with PTH2R antibody (green) and DAPI nuclear stain (blue). HIER: steam section in pH6 citrate buffer for 20 min.



Western blot testing of human 1) HEL and 2) SH-SY5Y cell lysate with PTH2R antibody. Predicted molecular weight ~62 kDa but may be observed at higher molecular weights due to glycosylation.

Description

Parathyroid hormone 2 receptor is a protein that in humans is encoded by the PTH2R gene. The protein encoded by this gene is a member of the G-protein coupled receptor 2 family. This protein is a receptor for parathyroid hormone (PTH). This receptor is more selective in ligand recognition and has a more specific tissue distribution compared to parathyroid hormone receptor 1 (PTH1R). It is activated only by PTH and not by parathyroid hormone-like hormone (PTHrP) and is particularly abundant in brain and pancreas. Alternative splicing results in multiple transcript variants.

Application Notes

Optimal dilution of the PTH2R antibody should be determined by the researcher.

Immunogen

An E.coli-derived human recombinant protein (A22-E511) was used as the immunogen for the PTH2R antibody.

Storage

After reconstitution, the PTH2R antibody can be stored for up to one month at 4°C. For long-term, aliquot and store at -20°C. Avoid repeated freezing and thawing.