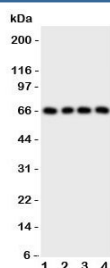


PTH1R Antibody (R31247)

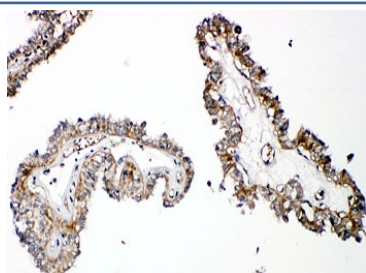
| Catalog No. | Formulation | Size |
|-------------|---|--------|
| R31247 | 0.5mg/ml if reconstituted with 0.2ml sterile DI water | 100 ug |

Bulk quote request

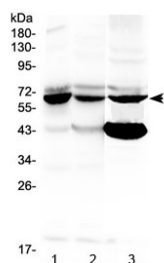
| | |
|---------------------------|---|
| Availability | 1-3 business days |
| Species Reactivity | Human, Mouse, Rat |
| Format | Antigen affinity purified |
| Clonality | Polyclonal (rabbit origin) |
| Isotype | Rabbit IgG |
| Purity | Antigen affinity |
| Buffer | Lyophilized from 1X PBS with 2.5% BSA and 0.025% sodium azide/thimerosal |
| UniProt | Q03431 |
| Applications | Western Blot : 0.5-1ug/ml Immunohistochemistry (FFPE) : 0.5-1ug/ml Immunocytochemistry : 0.5-1ug/ml |
| Limitations | This PTH1R antibody is available for research use only. |



Western blot testing of human 1) SK-OV-3, 2) U-2 OS, 3) HeLa and 4) SMMC-7721 cell lysate. Expected molecular weight ~66 kDa (unmodified), 85-95 kDa (glycosylated).



IHC-P: PTH1R antibody testing of human thyroid cancer tissue



Western blot testing of human 1) 293T, 2) MCF7 and 3) MDA-MB-231 cell lysate with PTH1R antibody at 0.5ug/ml. Expected molecular weight ~66 kDa (unmodified), 85-95 kDa (glycosylated).

Description

Parathyroid hormone/parathyroid hormone-related peptide receptor, also known as PTHR, is a protein that in humans is encoded by the PTH1R gene. PTHR is a member of a family of G protein-coupled receptors. PTHR gene was mapped to the vicinity of the 3p21.3-p21.2 boundary by PCR analysis of human/rodent somatic cell hybrid panels using oligonucleotide primers designed to amplify a portion of the gene from genomic DNA. This is a receptor for parathyroid hormone and for parathyroid hormone-related peptide. The activity of this receptor is mediated by G proteins which activate adenylyl cyclase and also a phosphatidylinositol-calcium second messenger system. PTH1R functions as a receptor for parathyroid hormone and for parathyroid hormone-related protein.

Application Notes

The stated application concentrations are suggested starting amounts. Titration of the PTH1R antibody may be required due to differences in protocols and secondary/substrate sensitivity.

Immunogen

An amino acid sequence from the C-terminus of human Parathyroid Hormone Receptor 1 (KLRETNAGRC DTRQQYRKL) was used as the immunogen for this PTH1R antibody (100% homologous in human, mouse and rat).

Storage

After reconstitution, the PTH1R antibody can be stored for up to one month at 4oC. For long-term, aliquot and store at -20oC. Avoid repeated freezing and thawing.