

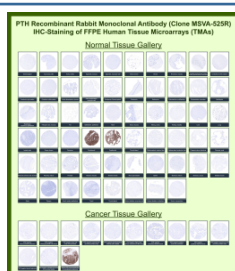
PTH Antibody / Parathyroid hormone [clone MSVA-525R] (V6107)

Catalog No.	Formulation	Size
V6107-100UG	Antibody in 1X PBS with 0.05% BSA, 0.05% sodium azide	100 ug
V6107-20UG	Antibody in 1X PBS with 0.05% BSA, 0.05% sodium azide	20 ug

Recombinant **RABBIT MONOCLONAL**

[Bulk quote request](#)

Species Reactivity	Human
Format	Purified
Host	Rabbit
Clonality	Recombinant Rabbit Monoclonal
Isotype	Rabbit IgG, kappa
Clone Name	MSVA-525R
UniProt	P01270
Localization	Secreted
Applications	Immunohistochemistry (FFPE) : 1-2ug/ml
Limitations	This PTH/Parathyroid hormone antibody is available for research use only.



Parathyroid hormone Rabbit Recombinant Monoclonal Antibody (MSVA-525R) tested on many normal and cancer tissues. The immunohistochemistry staining in these tissues aligns with the expression data in Human Protein Atlas.

Manual Protocol: Freshly cut sections should be used (less than 10 days between cutting and staining). Heat-induced antigen retrieval for 5 minutes in an autoclave at 121°C in pH 7.8 Target Retrieval Solution buffer. Apply the antibody at a dilution of 1:150 at 37°C for 60 minutes. Visualization of bound antibody by the EnVision Kit (Dako, Agilent) according to the manufacturer's directions.

Application Notes

- Optimal dilution of the PTH/Parathyroid hormone antibody should be determined by the researcher.
- This PTH/Parathyroid hormone antibody is recombinantly produced by expression in human HEK293 cells.

Immunogen

A synthetic peptide around amino acids 1-34 of human mature-PTH-polypeptide (exact sequence is proprietary) was used as the immunogen for the PTH/Parathyroid hormone antibody.

Storage

PTH/Parathyroid hormone antibody with sodium azide - store at 2 to 8°C; antibody without sodium azide - store at -20 to -80°C.