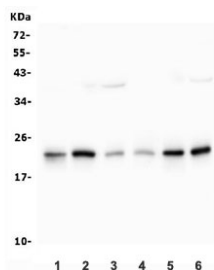


PTGES3 Antibody / p23 (RQ5622)

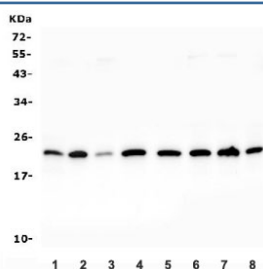
Catalog No.	Formulation	Size
RQ5622	0.5mg/ml if reconstituted with 0.2ml sterile DI water	100 ug

Bulk quote request

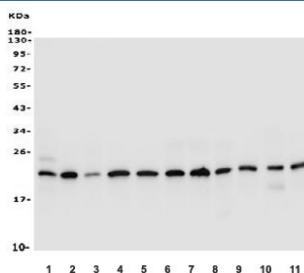
Availability	1-3 business days
Species Reactivity	Human, Mouse, Rat
Format	Antigen affinity purified
Clonality	Polyclonal (rabbit origin)
Isotype	Rabbit IgG
Purity	Affinity purified
Buffer	Lyophilized from 1X PBS with 2% Trehalose and 0.025% sodium azide
UniProt	Q15185
Applications	Western Blot : 0.25-0.5ug/ml Immunofluorescence : 2-4ug/ml Flow Cytometry : 1-3ug/million cells Direct ELISA : 0.1-0.5ug/ml
Limitations	This PTGES3 antibody is available for research use only.



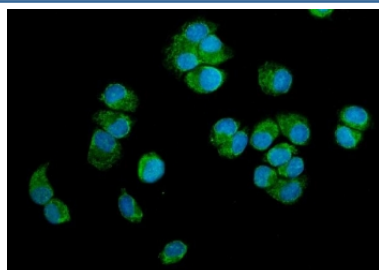
Western blot testing of 1) rat liver, 2) rat PC-12, 3) mouse liver, 4) mouse kidney, 5) mouse NIH 3T3 and 6) mouse HEPA1-6 lysate with PTGES3 antibody. Predicted molecular weight ~23 kDa.



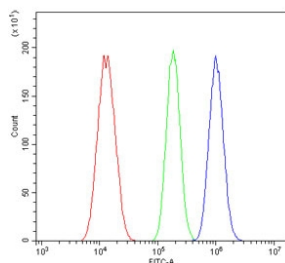
Western blot testing of human 1) HeLa, 2) Jurkat, 3) HepG2, 4) COLO 320, 5) Raji, 6) HEK293, 7) K562 and 8) ThP-1 lysate with PTGES3 antibody. Predicted molecular weight ~23 kDa.



Western blot testing of human 1) HeLa, 2) Jurkat, 3) HepG2, 4) COLO 320, 5) Raji, 6) HEK293, 7) K562, 8) ThP-1, 9) rat PC-12, 10) mouse NIH 3T3 and 11) mouse HEPA1-6 lysate with PTGES3 antibody. Predicted molecular weight ~23 kDa.



Immunofluorescent staining of FFPE human T-47D cells with PTGES3 antibody (green) and DAPI nuclear stain (blue). HIER: steam section in pH6 citrate buffer for 20 min.



Flow cytometry testing of human A549 cells with PTGES3 antibody at 1ug/million cells (blocked with goat sera); Red=cells alone, Green=isotype control, Blue= PTGES3 antibody.

Description

Prostaglandin E synthase 3 (cytosolic) is an enzyme that in humans is encoded by the PTGES3 gene. It is mapped to 12q13.3; 12. This gene encodes an enzyme that converts prostaglandin endoperoxide H2 (PGH2) to prostaglandin E2 (PGE2). This protein functions as a co-chaperone with heat shock protein 90 (HSP90), localizing to response elements in DNA and disrupting transcriptional activation complexes. Alternative splicing results in multiple transcript variants. There are multiple pseudogenes of this gene on several different chromosomes.

Application Notes

Optimal dilution of the PTGES3 antibody should be determined by the researcher.

Immunogen

A human recombinant protein (amino acids M1-K79) was used as the immunogen for the PTGES3 antibody.

Storage

After reconstitution, the PTGES3 antibody can be stored for up to one month at 4oC. For long-term, aliquot and store at -20oC. Avoid repeated freezing and thawing.

