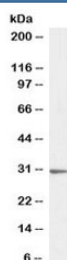


PTGES2 Antibody (R36437)

Catalog No.	Formulation	Size
R36437-100UG	0.5 mg/ml in 1X TBS, pH7.3, with 0.5% BSA (US sourced) and 0.02% sodium azide	100 ug

[Bulk quote request](#)

Availability	1-3 business days
Species Reactivity	Human
Format	Antigen affinity purified
Clonality	Polyclonal (goat origin)
Isotype	Goat Ig
Purity	Antigen affinity
Gene ID	80142
Applications	Western Blot : 1-3ug/ml ELISA (peptide) LOD : 1:128000
Limitations	This PTGES2 antibody is available for research use only.



Western blot testing of human HeLa cell lysate with PTGES2 antibody at 1ug/ml.
Predicted molecular weight: ~42 kDa but routinely visualized at 30-35 kDa (Ref 1).

Description

Additional name(s) for this target protein: Prostaglandin E synthase 2; GBF1; GATE-binding factor 1; Gamma-interferon-activated transcriptional element-binding factor 1

Application Notes

Optimal dilution of the PTGES2 antibody should be determined by the researcher.

Immunogen

Amino acids RLKSRHRLQDNVRED were used as the immunogen for this PTGES2 antibody.

Storage

Aliquot and store the PTGES2 antibody at -20oC.

References (1)